

Datasheet for ABIN2785198  
**anti-SCFD2 antibody (Middle Region)**[Go to Product page](#)

## 2 Images

## Overview

Quantity:	100 µL
Target:	SCFD2
Binding Specificity:	Middle Region
Reactivity:	Human, Mouse, Rat, Cow, Pig, Horse, Rabbit, Dog
Host:	Rabbit
Clonality:	Polyclonal
Conjugate:	This SCFD2 antibody is un-conjugated
Application:	Western Blotting (WB)

## Product Details

Immunogen:	The immunogen is a synthetic peptide corresponding to a region of Mouse
Sequence:	LVSGLSLCE HLGVREECFA VGPLSRVIAT DLANYAPAKN RKKTATGRAS
Predicted Reactivity:	Cow: 86%, Dog: 86%, Horse: 93%, Human: 100%, Mouse: 100%, Pig: 86%, Rabbit: 93%, Rat: 93%
Characteristics:	This is a rabbit polyclonal antibody against Scfd2. It was validated on Western Blot.
Purification:	Affinity Purified

## Target Details

Target:	SCFD2
Alternative Name:	Scfd2 ( <a href="#">SCFD2 Products</a> )
Background:	The function of this protein remains unknown.

## Target Details

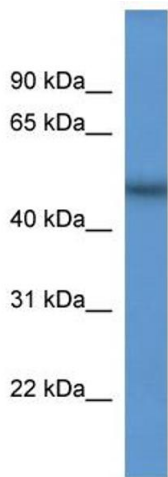
	Alias Symbols: 9330137G15, E430013M20Rik, STXBP1L1
	Protein Size: 477
Molecular Weight:	52 kDa
Gene ID:	212986
NCBI Accession:	<a href="#">NM_178672</a> , <a href="#">NP_848787</a>
UniProt:	<a href="#">Q3TR67</a>

## Application Details

Application Notes:	Optimal working dilutions should be determined experimentally by the investigator.
Comment:	Antigen size: 477 AA
Restrictions:	For Research Use only

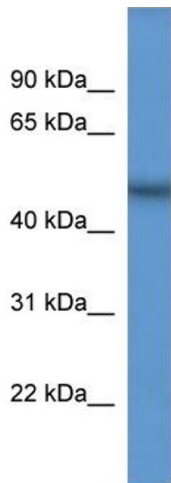
## Handling

Format:	Liquid
Concentration:	Lot specific
Buffer:	Liquid. Purified antibody supplied in 1x PBS buffer with 0.09 % (w/v) sodium azide and 2 % sucrose.
Preservative:	Sodium azide
Precaution of Use:	This product contains Sodium azide: a POISONOUS AND HAZARDOUS SUBSTANCE which should be handled by trained staff only.
Handling Advice:	Avoid repeated freeze-thaw cycles.
Storage:	-20 °C
Storage Comment:	For short term use, store at 2-8°C up to 1 week. For long term storage, store at -20°C in small aliquots to prevent freeze-thaw cycles.



**Western Blotting**

**Image 1. WB Suggested Anti-Scfd2 Antibody Titration:**  
0.2-1 ug/ml  
**ELISA Titer:** 1:1562500  
**Positive Control:** Mouse Kidney



Rabbit Anti-Scfd2 Antibody  
Catalog Number: ARP53029  
Lot Number: QC26257  
Lane: Mouse Kidney Lysate

Antibody Titration: 1.0 µg/ml  
Gel Concentration: 12%

**Western Blotting**

**Image 2. WB Suggested Anti-Scfd2**  
Antibody Titration: 0.2-1 µg/mL ELISA Titer: 1:1562500  
Positive Control: Mouse Kidney