

Datasheet for ABIN2785199  
**anti-PPM1K antibody (Middle Region)**



[Go to Product page](#)

1 Image

## Overview

Quantity:	100 µL
Target:	PPM1K
Binding Specificity:	Middle Region
Reactivity:	Human, Mouse, Rat, Cow, Guinea Pig, Horse, Rabbit, Zebrafish (Danio rerio), Dog
Host:	Rabbit
Clonality:	Polyclonal
Conjugate:	This PPM1K antibody is un-conjugated
Application:	Western Blotting (WB)

## Product Details

Immunogen:	The immunogen is a synthetic peptide directed towards the middle region of human PPM1K
Sequence:	AHAVTEQAIQ YGTEDNSTAV VVPFGAWGKY KNSEINFSFS RSFASSGRWA
Predicted Reactivity:	Cow: 93%, Dog: 92%, Guinea Pig: 100%, Horse: 100%, Human: 100%, Mouse: 100%, Rabbit: 100%, Rat: 100%, Zebrafish: 85%
Characteristics:	This is a rabbit polyclonal antibody against PPM1K. It was validated on Western Blot using a cell lysate as a positive control.
Purification:	Affinity Purified

## Target Details

Target:	PPM1K
---------	-------

## Target Details

Alternative Name:	PPM1K ( <a href="#">PPM1K Products</a> )
Background:	PPM1K regulates the mitochondrial permeability transition pore and is essential for cellular survival and development.  Alias Symbols: DKFZp667B084, DKFZp761G058, PP2Cm, PTMP, UG0882E07, hPTMP, PP2Ckappa  Protein Interaction Partner: BIRC2, MYB,  Protein Size: 372

Molecular Weight: 41 kDa

Gene ID: 152926

NCBI Accession: [NM\\_152542](#), [NP\\_689755](#)

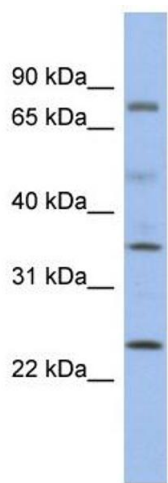
UniProt: [Q8N3J5](#)

## Application Details

Application Notes:	Optimal working dilutions should be determined experimentally by the investigator.
Comment:	Antigen size: 372 AA
Restrictions:	For Research Use only

## Handling

Format:	Liquid
Concentration:	Lot specific
Buffer:	Liquid. Purified antibody supplied in 1x PBS buffer with 0.09 % (w/v) sodium azide and 2 % sucrose.
Preservative:	Sodium azide
Precaution of Use:	This product contains Sodium azide: a POISONOUS AND HAZARDOUS SUBSTANCE which should be handled by trained staff only.
Handling Advice:	Avoid repeated freeze-thaw cycles.
Storage:	-20 °C
Storage Comment:	For short term use, store at 2-8°C up to 1 week. For long term storage, store at -20°C in small aliquots to prevent freeze-thaw cycles.



Western Blotting

**Image 1. WB Suggested Anti-PPM1K Antibody Titration:**

0.2-1 ug/ml

**ELISA Titer:** 1:62500

**Positive Control:** Human Placenta