



Datasheet for ABIN2785201
anti-BTNL9 antibody (Middle Region)



[Go to Product page](#)

1 Image

Overview

Quantity:	100 µL
Target:	BTNL9
Binding Specificity:	Middle Region
Reactivity:	Human, Horse, Cow, Dog, Pig, Guinea Pig, Rabbit
Host:	Rabbit
Clonality:	Polyclonal
Conjugate:	This BTNL9 antibody is un-conjugated
Application:	Western Blotting (WB)

Product Details

Immunogen:	The immunogen is a synthetic peptide directed towards the middle region of Human BTNL9
Sequence:	DKGTYGCRFH SDNFSGEALW ELEVAGLGSD PHL SLEGFKE GGIQLRLRSS
Predicted Reactivity:	Cow: 100%, Dog: 100%, Guinea Pig: 91%, Horse: 100%, Human: 100%, Pig: 100%, Rabbit: 91%
Characteristics:	This is a rabbit polyclonal antibody against BTNL9. It was validated on Western Blot.
Purification:	Affinity Purified

Target Details

Target:	BTNL9
Alternative Name:	BTNL9 (BTNL9 Products)
Background:	The function of this protein remains unknown.

Target Details

Protein Size: 344

Molecular Weight: 37 kDa

Gene ID: 153579

Application Details

Restrictions: For Research Use only

Handling

Format: Liquid

Concentration: 1 mg/mL

Buffer: Liquid. Purified antibody supplied in 1x PBS buffer with 0.09 % (w/v) sodium azide and 2 % sucrose.

Preservative: Sodium azide

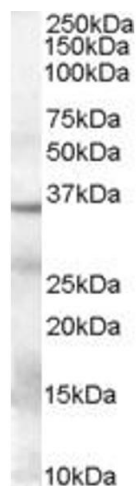
Precaution of Use: This product contains Sodium azide: a POISONOUS AND HAZARDOUS SUBSTANCE which should be handled by trained staff only.

Handling Advice: Avoid repeat freeze-thaw cycles.

Storage: -20 °C

Storage Comment: For short term use, store at 2-8°C up to 1 week. For long term storage, store at -20°C in small aliquots to prevent freeze-thaw cycles.

Images



Western Blotting

Image 1.