



[Go to Product page](#)

Datasheet for ABIN2785216
anti-CCDC116 antibody (C-Term)

1 Image

Overview

Quantity:	100 µL
Target:	CCDC116
Binding Specificity:	C-Term
Reactivity:	Human
Host:	Rabbit
Clonality:	Polyclonal
Conjugate:	This CCDC116 antibody is un-conjugated
Application:	Western Blotting (WB)

Product Details

Immunogen:	The immunogen is a synthetic peptide directed towards the C-terminal region of Human CCDC116
Sequence:	VQQEPATHTA QDQATEPCRS LYTNLPASRQ LSPLEPKLYM SACTGMGSSP
Predicted Reactivity:	Human: 100%
Characteristics:	This is a rabbit polyclonal antibody against CCDC116. It was validated on Western Blot.
Purification:	Affinity Purified

Target Details

Target:	CCDC116
Alternative Name:	CCDC116 (CCDC116 Products)

Target Details

Background: The function of this protein remains unknown.
Alias Symbols: -
Protein Interaction Partner: FAM9B, USHBP1, NGFRAP1, TFIP11, MTUS2, TRAF1, MDFI, CCDC85B, KRTAP4-12, SLC2A4,
Protein Size: 613

Molecular Weight: 67 kDa

Gene ID: 164592

NCBI Accession: [NM_152612](#), [NP_689825](#)

Application Details

Restrictions: For Research Use only

Handling

Format: Liquid

Concentration: 1 mg/mL

Buffer: Liquid. Purified antibody supplied in 1x PBS buffer with 0.09 % (w/v) sodium azide and 2 % sucrose.

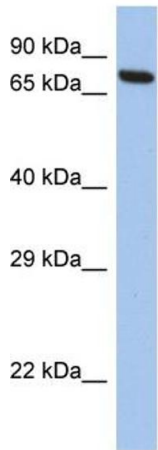
Preservative: Sodium azide

Precaution of Use: This product contains Sodium azide: a POISONOUS AND HAZARDOUS SUBSTANCE which should be handled by trained staff only.

Handling Advice: Avoid repeat freeze-thaw cycles.

Storage: -20 °C

Storage Comment: For short term use, store at 2-8°C up to 1 week. For long term storage, store at -20°C in small aliquots to prevent freeze-thaw cycles.



Host: Rabbit
Target Name: CCDC116
Sample Tissue: SH-SY5Y Cell Lysate
Antibody Dilution: 1.0µg/ml

Western Blotting

Image 1. Host: Rabbit Target Name: CCDC116 Sample
Tissue: Human SH-SY5Y Whole Cell Antibody Dilution:
1ug/ml