

Datasheet for ABIN2785217
anti-WBP2NL antibody (N-Term)[Go to Product page](#)

1 Image

Overview

Quantity:	100 µL
Target:	WBP2NL
Binding Specificity:	N-Term
Reactivity:	Human, Dog, Guinea Pig, Rabbit, Cow, Pig, Rat
Host:	Rabbit
Clonality:	Polyclonal
Conjugate:	This WBP2NL antibody is un-conjugated
Application:	Western Blotting (WB)

Product Details

Immunogen:	The immunogen is a synthetic peptide directed towards the N terminal region of human WBP2NL
Sequence:	MAVNQSHTEN RRGALIPNGE SLLKRSPNVE LSFPQRSEGS NVFSGRKTGT
Predicted Reactivity:	Cow: 92%, Dog: 85%, Guinea Pig: 85%, Human: 100%, Pig: 92%, Rabbit: 77%, Rat: 92%
Characteristics:	This is a rabbit polyclonal antibody against WBP2NL. It was validated on Western Blot using a cell lysate as a positive control.
Purification:	Affinity Purified

Target Details

Target:	WBP2NL
---------	--------

Target Details

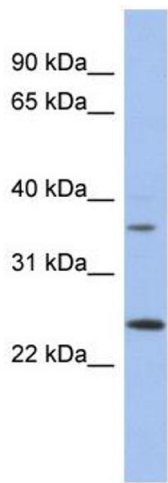
Alternative Name:	WBP2NL (WBP2NL Products)
Background:	WBP2NL may play a role in meiotic resumption and pronuclear formation, mediated by a WW domain-signaling pathway during fertilization. Alias Symbols: FLJ26145, MGC26816, PAWP Protein Size: 309
Molecular Weight:	32 kDa
Gene ID:	164684
NCBI Accession:	NM_152613 , NP_689826
UniProt:	Q6ICG8

Application Details

Application Notes:	Optimal working dilutions should be determined experimentally by the investigator.
Comment:	Antigen size: 309 AA
Restrictions:	For Research Use only

Handling

Format:	Liquid
Concentration:	Lot specific
Buffer:	Liquid. Purified antibody supplied in 1x PBS buffer with 0.09 % (w/v) sodium azide and 2 % sucrose.
Preservative:	Sodium azide
Precaution of Use:	This product contains Sodium azide: a POISONOUS AND HAZARDOUS SUBSTANCE which should be handled by trained staff only.
Handling Advice:	Avoid repeated freeze-thaw cycles.
Storage:	-20 °C
Storage Comment:	For short term use, store at 2-8°C up to 1 week. For long term storage, store at -20°C in small aliquots to prevent freeze-thaw cycles.



Western Blotting				
Image	1.	WB	Suggested	Anti-WBP2NL Antibody
Titration: 0.2-1 ug/ml				
ELISA Titer: 1:312500				
Positive Control: Human Placenta				