

Datasheet for ABIN2785221
anti-FAM46D antibody (Middle Region)[Go to Product page](#)

1 Image

Overview

Quantity:	100 µL
Target:	FAM46D
Binding Specificity:	Middle Region
Reactivity:	Human, Cow, Dog, Pig
Host:	Rabbit
Clonality:	Polyclonal
Conjugate:	This FAM46D antibody is un-conjugated
Application:	Western Blotting (WB)

Product Details

Immunogen:	The immunogen is a synthetic peptide directed towards the middle region of human FAM46D
Sequence:	LPNTQKVTCF YQPAPYFAAE ARYPIYVIPE PPPVSFQPYH PLHFRGSNGM
Predicted Reactivity:	Cow: 100%, Dog: 100%, Human: 100%, Pig: 100%
Characteristics:	This is a rabbit polyclonal antibody against FAM46D. It was validated on Western Blot using a cell lysate as a positive control.
Purification:	Affinity Purified

Target Details

Target:	FAM46D
Alternative Name:	FAM46D (FAM46D Products)

Target Details

Background: The specific function of FAM46D is not yet known.
Alias Symbols: MGC26999, CT112, CT1.26
Protein Interaction Partner: C1orf94, RHOXF2,
Protein Size: 389

Molecular Weight: 44 kDa

Gene ID: 169966

NCBI Accession: [NM_152630](#), [NP_689843](#)

UniProt: [Q8NEK8](#)

Application Details

Application Notes: Optimal working dilutions should be determined experimentally by the investigator.

Comment: Antigen size: 389 AA

Restrictions: For Research Use only

Handling

Format: Liquid

Concentration: Lot specific

Buffer: Liquid. Purified antibody supplied in 1x PBS buffer with 0.09 % (w/v) sodium azide and 2 % sucrose.

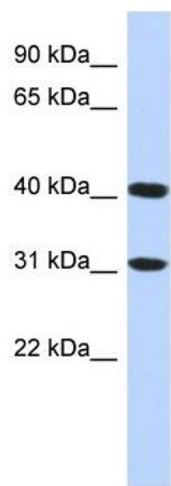
Preservative: Sodium azide

Precaution of Use: This product contains Sodium azide: a POISONOUS AND HAZARDOUS SUBSTANCE which should be handled by trained staff only.

Handling Advice: Avoid repeated freeze-thaw cycles.

Storage: -20 °C

Storage Comment: For short term use, store at 2-8°C up to 1 week. For long term storage, store at -20°C in small aliquots to prevent freeze-thaw cycles.



Western Blotting

Image 1. WB Suggested Anti-FAM46D Antibody Titration:
0.2-1 ug/ml
ELISA Titer: 1:62500
Positive Control: HepG2 cell lysate