

Datasheet for ABIN2785228
anti-OST alpha antibody (Middle Region)[Go to Product page](#)

2 Images

Overview

Quantity:	100 µL
Target:	OST alpha (OSTALPHA)
Binding Specificity:	Middle Region
Reactivity:	Human, Cow, Horse, Dog, Guinea Pig, Mouse, Rabbit, Rat
Host:	Rabbit
Clonality:	Polyclonal
Conjugate:	This OST alpha antibody is un-conjugated
Application:	Western Blotting (WB)

Product Details

Immunogen:	The immunogen is a synthetic peptide directed towards the middle region of human OSTalpha
Sequence:	LLMLGPFQYA FLKITLTLVG LFLVPDGIYD PADISEGSTA LWINTFLGVS
Predicted Reactivity:	Cow: 86%, Dog: 100%, Guinea Pig: 92%, Horse: 100%, Human: 100%, Mouse: 83%, Rabbit: 92%, Rat: 92%
Characteristics:	This is a rabbit polyclonal antibody against OSTalpha. It was validated on Western Blot.
Purification:	Affinity Purified

Target Details

Target:	OST alpha (OSTALPHA)
Alternative Name:	OSTalpha (OSTALPHA Products)

Target Details

Background: OSTalpha is essential component of the Ost-alpha/Ost-beta complex, a heterodimer that acts as the intestinal basolateral transporter responsible for bile acid export from enterocytes into portal blood. OSTalpha efficiently transports the major species of bile acids.

Alias Symbols: MGC39807, OSTA, OSTalpha

Protein Interaction Partner: ATXN1,

Protein Size: 340

Molecular Weight: 38 kDa

Gene ID: 200931

NCBI Accession: [NM_152672](#), [NP_689885](#)

UniProt: [Q86UW1](#)

Application Details

Application Notes: Optimal working dilutions should be determined experimentally by the investigator.

Comment: Antigen size: 340 AA

Restrictions: For Research Use only

Handling

Format: Liquid

Concentration: Lot specific

Buffer: Liquid. Purified antibody supplied in 1x PBS buffer with 0.09 % (w/v) sodium azide and 2 % sucrose.

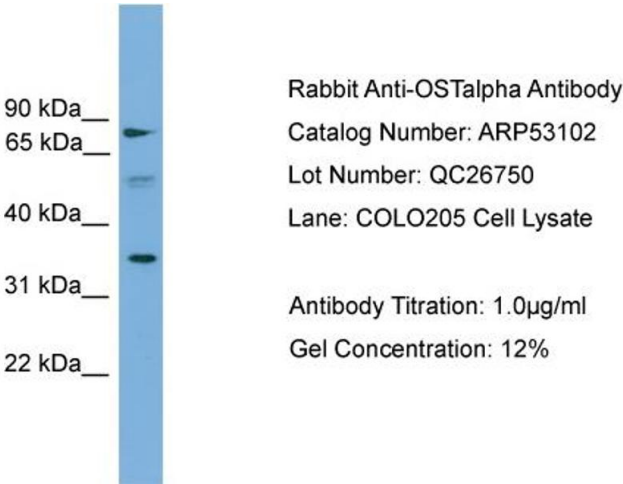
Preservative: Sodium azide

Precaution of Use: This product contains Sodium azide: a POISONOUS AND HAZARDOUS SUBSTANCE which should be handled by trained staff only.

Handling Advice: Avoid repeated freeze-thaw cycles.

Storage: -20 °C

Storage Comment: For short term use, store at 2-8°C up to 1 week. For long term storage, store at -20°C in small aliquots to prevent freeze-thaw cycles.

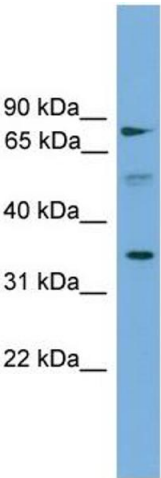


Western Blotting

Image 1. WB Suggested Anti-OSTalpha

Antibody Titration: 0.2-1 µg/mL

Positive Control: COLO205 cell lysate



Western Blotting

Image 2. WB Suggested Anti-OSTalpha Antibody Titration:

0.2-1 ug/ml

Positive Control: COLO205 cell lysate