

Datasheet for ABIN2785236
anti-ASPRV1 antibody (Middle Region)[Go to Product page](#)

1 Image

Overview

Quantity:	100 µL
Target:	ASPRV1
Binding Specificity:	Middle Region
Reactivity:	Human, Rat, Mouse, Guinea Pig, Horse, Cow, Dog, Rabbit
Host:	Rabbit
Clonality:	Polyclonal
Conjugate:	This ASPRV1 antibody is un-conjugated
Application:	Western Blotting (WB)

Product Details

Immunogen:	The immunogen is a synthetic peptide directed towards the middle region of Mouse Asprv1
Sequence:	DVLQDHNAVL DFEHRTCTLK GKKFRLLPVG SSLEDEFDLE LIEEEEESSA
Predicted Reactivity:	Cow: 93%, Dog: 93%, Guinea Pig: 93%, Horse: 86%, Human: 100%, Mouse: 93%, Rabbit: 93%, Rat: 93%
Characteristics:	This is a rabbit polyclonal antibody against Asprv1. It was validated on Western Blot.
Purification:	Affinity Purified

Target Details

Target:	ASPRV1
Alternative Name:	Asprv1 (ASPRV1 Products)

Target Details

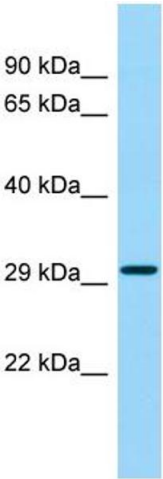
Background:	The function of this protein remains unknown. Alias Symbols: 2300003P22Rik, AA986851, SASP, SASPase, Taps Protein Size: 305
Molecular Weight:	33 kDa
Gene ID:	67855
NCBI Accession:	NM_026414
UniProt:	Q09PK2
Pathways:	Carbohydrate Homeostasis , Cell RedoxHomeostasis

Application Details

Application Notes:	Optimal working dilutions should be determined experimentally by the investigator.
Comment:	Antigen size: 305 AA
Restrictions:	For Research Use only

Handling

Format:	Liquid
Concentration:	Lot specific
Buffer:	Liquid. Purified antibody supplied in 1x PBS buffer with 0.09 % (w/v) sodium azide and 2 % sucrose.
Preservative:	Sodium azide
Precaution of Use:	This product contains Sodium azide: a POISONOUS AND HAZARDOUS SUBSTANCE which should be handled by trained staff only.
Handling Advice:	Avoid repeated freeze-thaw cycles.
Storage:	-20 °C
Storage Comment:	For short term use, store at 2-8°C up to 1 week. For long term storage, store at -20°C in small aliquots to prevent freeze-thaw cycles.



Western Blotting

Image 1. WB Suggested Anti-Asprv1 Antibody Titration: 1.0 ug/ml Positive Control: Mouse Testis