



[Go to Product page](#)

Datasheet for ABIN2785242

anti-C22orf25 antibody (N-Term)

1 Image

1 Publication

Overview

Quantity:	100 µL
Target:	C22orf25
Binding Specificity:	N-Term
Reactivity:	Human, Mouse, Rat, Rabbit, Cow, Dog, Guinea Pig, Horse, Zebrafish (Danio rerio), Pig
Host:	Rabbit
Clonality:	Polyclonal
Conjugate:	This C22orf25 antibody is un-conjugated
Application:	Western Blotting (WB)

Product Details

Immunogen:	The immunogen is a synthetic peptide directed towards the N terminal region of human C22orf25
Sequence:	MCIIFKFDLP RPVSKNAYRL ILAANRDEFY SRPSKLADFW GNNNEILSGL
Predicted Reactivity:	Cow: 100%, Dog: 100%, Guinea Pig: 93%, Horse: 100%, Human: 100%, Mouse: 100%, Pig: 100%, Rabbit: 100%, Rat: 100%, Zebrafish: 92%
Characteristics:	This is a rabbit polyclonal antibody against C22orf25. It was validated on Western Blot using a cell lysate as a positive control.
Purification:	Affinity Purified

Target Details

Target:	C22orf25
---------	----------

Target Details

Alternative Name:	C22orf25 (C22orf25 Products)
Background:	The exact functions of C22orf25 remain unknown. Alias Symbols: DKFZp761P1121, C22orf25 Protein Interaction Partner: SCO2, PNLIPRP2, ELAVL1, Protein Size: 276
Molecular Weight:	31 kDa
Gene ID:	128989
NCBI Accession:	NM_152906 , NP_690870
UniProt:	Q6ICL3

Application Details

Application Notes:	Optimal working dilutions should be determined experimentally by the investigator.
Comment:	Antigen size: 276 AA
Restrictions:	For Research Use only

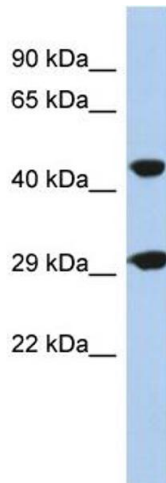
Handling

Format:	Liquid
Concentration:	Lot specific
Buffer:	Liquid. Purified antibody supplied in 1x PBS buffer with 0.09 % (w/v) sodium azide and 2 % sucrose.
Preservative:	Sodium azide
Precaution of Use:	This product contains Sodium azide: a POISONOUS AND HAZARDOUS SUBSTANCE which should be handled by trained staff only.
Handling Advice:	Avoid repeated freeze-thaw cycles.
Storage:	-20 °C
Storage Comment:	For short term use, store at 2-8°C up to 1 week. For long term storage, store at -20°C in small aliquots to prevent freeze-thaw cycles.

Publications

Product cited in: Suzuki, Yoshitomo-Nakagawa, Maruyama, Suyama, Sugano: "Construction and characterization

of a full length-enriched and a 5'-end-enriched cDNA library." in: **Gene**, Vol. 200, Issue 1-2, pp. 149-56, (1997) ([PubMed](#)).



Western Blotting

Image 1. WB Suggested Anti-C22orf25 Antibody Titration:

0.2-1 ug/ml

ELISA Titer: 1:1562500

Positive Control: Human Muscle