

Datasheet for ABIN2785249
anti-ARHGEF19 antibody (Middle Region)[Go to Product page](#)

2 Images

Overview

Quantity:	100 µL
Target:	ARHGEF19
Binding Specificity:	Middle Region
Reactivity:	Human, Rat, Horse, Mouse, Pig, Cow
Host:	Rabbit
Clonality:	Polyclonal
Conjugate:	This ARHGEF19 antibody is un-conjugated
Application:	Western Blotting (WB)

Product Details

Immunogen:	The immunogen is a synthetic peptide directed towards the middle region of human ARHGEF19
Sequence:	RFLNSVLVYQ EYSDVASARE LRRQQRREEEG PGDEAEGAE E GPGPPRANLS
Predicted Reactivity:	Cow: 93%, Horse: 100%, Human: 100%, Mouse: 100%, Pig: 100%, Rat: 100%
Characteristics:	This is a rabbit polyclonal antibody against ARHGEF19. It was validated on Western Blot.
Purification:	Affinity Purified

Target Details

Target:	ARHGEF19
Alternative Name:	ARHGEF19 (ARHGEF19 Products)
Background:	Guanine nucleotide exchange factors (GEFs) such as ARHGEF19 accelerate the GTPase activity

Target Details

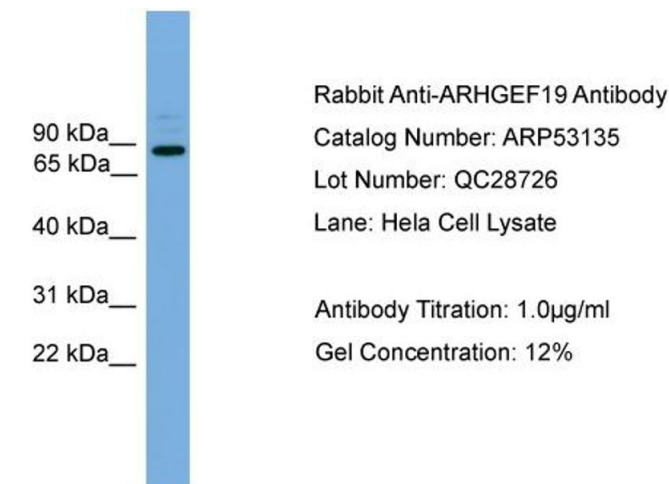
	of Rho GTPases (see RHOA, MIM 165390). Alias Symbols: FLJ33962, RP4-733M16.1, WGEF Protein Interaction Partner: UBC, Protein Size: 802
Molecular Weight:	89 kDa
Gene ID:	128272
NCBI Accession:	NM_153213 , NP_694945
UniProt:	Q8IW93

Application Details

Application Notes:	Optimal working dilutions should be determined experimentally by the investigator.
Comment:	Antigen size: 802 AA
Restrictions:	For Research Use only

Handling

Format:	Liquid
Concentration:	Lot specific
Buffer:	Liquid. Purified antibody supplied in 1x PBS buffer with 0.09 % (w/v) sodium azide and 2 % sucrose.
Preservative:	Sodium azide
Precaution of Use:	This product contains Sodium azide: a POISONOUS AND HAZARDOUS SUBSTANCE which should be handled by trained staff only.
Handling Advice:	Avoid repeated freeze-thaw cycles.
Storage:	-20 °C
Storage Comment:	For short term use, store at 2-8°C up to 1 week. For long term storage, store at -20°C in small aliquots to prevent freeze-thaw cycles.

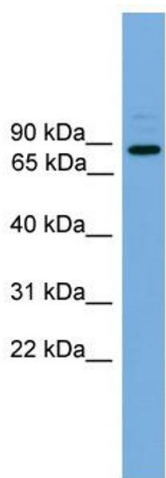


Western Blotting

Image 1. WB Suggested Anti-ARHGEF19

Antibody Titration: 0.2-1 µg/mL

Positive Control: Hela cell lysate



Western Blotting

Image 2. WB Suggested Anti-ARHGEF19 Antibody

Titration: 0.2-1 ug/ml

Positive Control: Hela cell lysate