



[Go to Product page](#)

Datasheet for ABIN2785251
anti-LACC1 antibody (C-Term)

1 Image

Overview

Quantity:	100 µL
Target:	LACC1 (C13orf31)
Binding Specificity:	C-Term
Reactivity:	Human, Mouse, Rat, Dog, Pig, Cow, Guinea Pig, Horse, Rabbit, Zebrafish (Danio rerio)
Host:	Rabbit
Clonality:	Polyclonal
Conjugate:	This LACC1 antibody is un-conjugated
Application:	Western Blotting (WB)

Product Details

Sequence:	LERGGILPQN IQDQKEDLDL CTSCHPEKFF SHVRDGLNFG TQIGFISLRE
Predicted Reactivity:	Cow: 86%, Dog: 100%, Guinea Pig: 93%, Horse: 100%, Human: 100%, Mouse: 100%, Pig: 100%, Rabbit: 93%, Rat: 100%, Zebrafish: 92%
Characteristics:	This is a rabbit polyclonal antibody against 9030625A04Rik. It was validated on Western Blot.
Purification:	Affinity Purified

Target Details

Target:	LACC1 (C13orf31)
Alternative Name:	9030625A04Rik (C13orf31 Products)
Background:	The function of this protein remains unknown.

Target Details

Alias Symbols: Lacc1, 9030625A04Rik

Protein Size: 430

Molecular Weight: 47 kDa

Gene ID: 210808

NCBI Accession: [NM_172488](#), [NP_766076](#)

UniProt: [Q8BZT9](#)

Application Details

Application Notes: Optimal working dilutions should be determined experimentally by the investigator.

Comment: Antigen size: 430 AA

Restrictions: For Research Use only

Handling

Format: Liquid

Concentration: Lot specific

Buffer: Liquid. Purified antibody supplied in 1x PBS buffer with 0.09 % (w/v) sodium azide and 2 % sucrose.

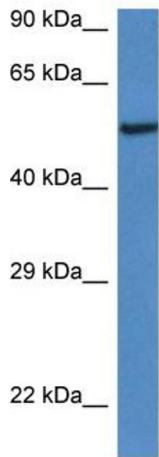
Preservative: Sodium azide

Precaution of Use: This product contains Sodium azide: a POISONOUS AND HAZARDOUS SUBSTANCE which should be handled by trained staff only.

Handling Advice: Avoid repeated freeze-thaw cycles.

Storage: -20 °C

Storage Comment: For short term use, store at 2-8°C up to 1 week. For long term storage, store at -20°C in small aliquots to prevent freeze-thaw cycles.



Rabbit Anti-9030625A04Rik Antibody
Catalog Number: ARP53140
Lot Number: QC26462
Lane: Mouse Heart Lysate

Antibody Titration: 1.0µg/ml
Gel Concentration: 12%

Western Blotting

Image 1.