



[Go to Product page](#)

Datasheet for ABIN2785261

anti-TMEM139 antibody (N-Term)

2 Images

Overview

Quantity:	100 µL
Target:	TMEM139
Binding Specificity:	N-Term
Reactivity:	Human, Cow, Dog, Horse, Pig, Rabbit
Host:	Rabbit
Clonality:	Polyclonal
Conjugate:	This TMEM139 antibody is un-conjugated
Application:	Western Blotting (WB)

Product Details

Immunogen:	The immunogen is a synthetic peptide directed towards the N terminal region of human TMEM139
Sequence:	ITPVAYFFLT LGGFFLFAYL LVRFLEWGLR SQLQSMQTES PGPSGNARDN
Predicted Reactivity:	Cow: 79%, Dog: 86%, Horse: 86%, Human: 100%, Pig: 86%, Rabbit: 86%
Characteristics:	This is a rabbit polyclonal antibody against TMEM139. It was validated on Western Blot.
Purification:	Affinity Purified

Target Details

Target:	TMEM139
Alternative Name:	TMEM139 (TMEM139 Products)

Target Details

Background: The function of this protein remains unknown.
Alias Symbols: FLJ90586
Protein Interaction Partner: SMURF2,
Protein Size: 216

Molecular Weight: 24 kDa

Gene ID: 135932

NCBI Accession: [NM_153345](#), [NP_699176](#)

UniProt: [Q8IV31](#)

Application Details

Application Notes: Optimal working dilutions should be determined experimentally by the investigator.

Comment: Antigen size: 216 AA

Restrictions: For Research Use only

Handling

Format: Liquid

Concentration: Lot specific

Buffer: Liquid. Purified antibody supplied in 1x PBS buffer with 0.09 % (w/v) sodium azide and 2 % sucrose.

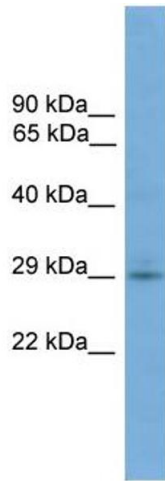
Preservative: Sodium azide

Precaution of Use: This product contains Sodium azide: a POISONOUS AND HAZARDOUS SUBSTANCE which should be handled by trained staff only.

Handling Advice: Avoid repeated freeze-thaw cycles.

Storage: -20 °C

Storage Comment: For short term use, store at 2-8°C up to 1 week. For long term storage, store at -20°C in small aliquots to prevent freeze-thaw cycles.

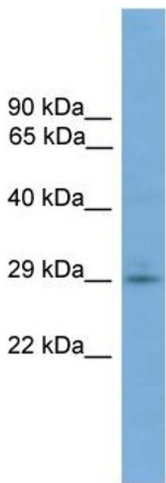


Western Blotting

Image 1. WB Suggested Anti-TMEM139 Antibody

Titration: 0.2-1 ug/ml

Positive Control: COLO205 cell lysate



Rabbit Anti-TMEM139 Antibody

Catalog Number: ARP53159

Lot Number: QC26670

Lane: COLO205 Cell Lysate

Antibody Titration: 1.0µg/ml

Gel Concentration: 12%

Western Blotting

Image 2. WB Suggested Anti-TMEM139

Antibody Titration: 0.2-1 µg/mL

Positive Control: COLO205 cell lysate