

Datasheet for ABIN2785284
anti-TTL antibody (Middle Region)



[Go to Product page](#)

1 Image

Overview

Quantity:	100 µL
Target:	TTL
Binding Specificity:	Middle Region
Reactivity:	Human, Mouse, Rat, Cow, Dog, Guinea Pig, Horse, Rabbit, Zebrafish (Danio rerio)
Host:	Rabbit
Clonality:	Polyclonal
Conjugate:	This TTL antibody is un-conjugated
Application:	Western Blotting (WB)

Product Details

Immunogen:	The immunogen is a synthetic peptide directed towards the middle region of human TTL
Sequence:	LYREGVLRTA SEPYHVDNFQ DKTCHLTNHC IQKEYSKNYG KYEEGNEMFF
Predicted Reactivity:	Cow: 100%, Dog: 100%, Guinea Pig: 100%, Horse: 100%, Human: 100%, Mouse: 100%, Rabbit: 100%, Rat: 100%, Zebrafish: 79%
Characteristics:	This is a rabbit polyclonal antibody against TTL. It was validated on Western Blot using a cell lysate as a positive control.
Purification:	Affinity Purified

Target Details

Target:	TTL
---------	-----

Target Details

Alternative Name:	TTL (TTL Products)
Background:	<p>TTL catalyzes the post-translational addition of a tyrosine to the C-terminal end of detyrosinated alpha-tubulin. TTL is a cytosolic enzyme involved in the posttranslational modification of alpha-tubulin (see MIM 602529). Alpha-tubulin within assembled microtubules is detyrosinated over time at the C terminus. After microtubule disassembly, TTL restores the tyrosine residues and consequently participates in a cycle of tubulin detyrosination and tyrosination (Erck et al., 2003 [PubMed 14571137]).[supplied by OMIM].</p> <p>Alias Symbols: MGC46235</p> <p>Protein Interaction Partner: ELAVL1,</p> <p>Protein Size: 377</p>
Molecular Weight:	43 kDa
Gene ID:	150465
NCBI Accession:	NM_153712 , NP_714923
UniProt:	Q8NG68
Pathways:	Regulation of Cell Size

Application Details

Application Notes:	Optimal working dilutions should be determined experimentally by the investigator.
Comment:	Antigen size: 377 AA
Restrictions:	For Research Use only

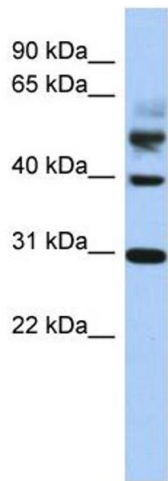
Handling

Format:	Liquid
Concentration:	Lot specific
Buffer:	Liquid. Purified antibody supplied in 1x PBS buffer with 0.09 % (w/v) sodium azide and 2 % sucrose.
Preservative:	Sodium azide
Precaution of Use:	This product contains Sodium azide: a POISONOUS AND HAZARDOUS SUBSTANCE which should be handled by trained staff only.
Handling Advice:	Avoid repeated freeze-thaw cycles.

Handling

Storage:	-20 °C
Storage Comment:	For short term use, store at 2-8°C up to 1 week. For long term storage, store at -20°C in small aliquots to prevent freeze-thaw cycles.

Images



Western Blotting

Image 1. WB Suggested Anti-TTL Antibody Titration: 0.2-1 ug/ml

ELISA Titer: 1:1562500

Positive Control: Human Lung