

Datasheet for ABIN2785290
anti-SH2D3C antibody (N-Term)[Go to Product page](#)

1 Image

Overview

Quantity:	100 µL
Target:	SH2D3C
Binding Specificity:	N-Term
Reactivity:	Human, Mouse, Rat, Rabbit, Cow, Dog, Guinea Pig, Zebrafish (Danio rerio), Horse
Host:	Rabbit
Clonality:	Polyclonal
Conjugate:	This SH2D3C antibody is un-conjugated
Application:	Western Blotting (WB)

Product Details

Immunogen:	The immunogen is a synthetic peptide directed towards the N terminal region of human SH2D3C
Sequence:	AGSDYVKFSK EKYILDSSPE KLHKELEEEL KLSSTDLRSH AWYHGRIPRE
Predicted Reactivity:	Cow: 100%, Dog: 100%, Guinea Pig: 100%, Horse: 93%, Human: 100%, Mouse: 100%, Rabbit: 100%, Rat: 100%, Zebrafish: 79%
Characteristics:	This is a rabbit polyclonal antibody against SH2D3C. It was validated on Western Blot using a cell lysate as a positive control.
Purification:	Affinity Purified

Target Details

Target:	SH2D3C
---------	--------

Target Details

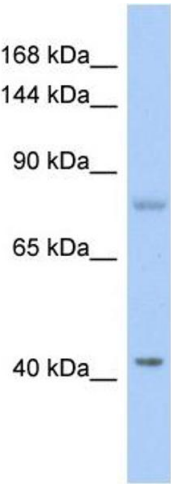
Alternative Name:	SH2D3C (SH2D3C Products)
Background:	<p>SH2D3C is an Eph receptor-binding protein which may be a positive regulator of TCR signaling. Binding to BCAR1 of SH2D3C is required to induce membrane ruffling and promote EGF-dependent cell migration.</p> <p>Alias Symbols: CHAT, FLJ39664, NSP3, PRO34088</p> <p>Protein Interaction Partner: LYN, NEDD9, EFS, CARD11, SNCAIP, BCAR1, PTK2B, EPHB2, SRC, MAPK1,</p> <p>Protein Size: 703</p>
Molecular Weight:	77 kDa
Gene ID:	10044
NCBI Accession:	NM_170600 , NP_733745

Application Details

Application Notes:	Optimal working dilutions should be determined experimentally by the investigator.
Comment:	Antigen size: 703 AA
Restrictions:	For Research Use only

Handling

Format:	Liquid
Concentration:	Lot specific
Buffer:	Liquid. Purified antibody supplied in 1x PBS buffer with 0.09 % (w/v) sodium azide and 2 % sucrose.
Preservative:	Sodium azide
Precaution of Use:	This product contains Sodium azide: a POISONOUS AND HAZARDOUS SUBSTANCE which should be handled by trained staff only.
Handling Advice:	Avoid repeated freeze-thaw cycles.
Storage:	-20 °C
Storage Comment:	For short term use, store at 2-8°C up to 1 week. For long term storage, store at -20°C in small aliquots to prevent freeze-thaw cycles.



Western Blotting

Image 1. WB Suggested Anti-SH2D3C Antibody Titration:

0.2-1 ug/ml

ELISA Titer: 1:1562500

Positive Control: Jurkat cell lysate