

Datasheet for ABIN2785297
anti-KLHDC1 antibody (N-Term)[Go to Product page](#)

1 Image

Overview

Quantity:	100 µL
Target:	KLHDC1
Binding Specificity:	N-Term
Reactivity:	Human, Mouse, Rat, Cow, Dog, Horse, Pig, Rabbit
Host:	Rabbit
Clonality:	Polyclonal
Conjugate:	This KLHDC1 antibody is un-conjugated
Application:	Western Blotting (WB)

Product Details

Immunogen:	The immunogen is a synthetic peptide directed towards the N terminal region of human KLHDC1
Sequence:	IDSGWLWRMHL MEGELPASMS GSCGACINGK LYIFGGYDDK GYSNRLYFVN
Predicted Reactivity:	Cow: 100%, Dog: 100%, Horse: 100%, Human: 100%, Mouse: 100%, Pig: 93%, Rabbit: 93%, Rat: 100%
Characteristics:	This is a rabbit polyclonal antibody against KLHDC1. It was validated on Western Blot using a cell lysate as a positive control.
Purification:	Affinity Purified

Target Details

Target:	KLHDC1
---------	--------

Target Details

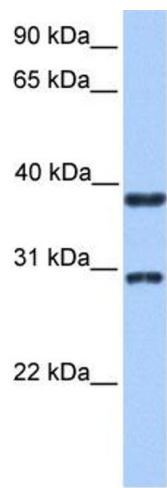
Alternative Name:	KLHDC1 (KLHDC1 Products)
Background:	<p>KLHDC1 contains 6 Kelch repeats. KLHDC1 and KLHDC2 have differential localization and activity in cultured mammalian cells. The exact function of KLHDC1 remains unknown.</p> <p>Alias Symbols: MGC126644, MGC126646, MST025</p> <p>Protein Size: 406</p>
Molecular Weight:	47 kDa
Gene ID:	122773
NCBI Accession:	NM_172193 , NP_751943
UniProt:	Q8N7A1

Application Details

Application Notes:	Optimal working dilutions should be determined experimentally by the investigator.
Comment:	Antigen size: 406 AA
Restrictions:	For Research Use only

Handling

Format:	Liquid
Concentration:	Lot specific
Buffer:	Liquid. Purified antibody supplied in 1x PBS buffer with 0.09 % (w/v) sodium azide and 2 % sucrose.
Preservative:	Sodium azide
Precaution of Use:	This product contains Sodium azide: a POISONOUS AND HAZARDOUS SUBSTANCE which should be handled by trained staff only.
Handling Advice:	Avoid repeated freeze-thaw cycles.
Storage:	-20 °C
Storage Comment:	For short term use, store at 2-8°C up to 1 week. For long term storage, store at -20°C in small aliquots to prevent freeze-thaw cycles.



Western Blotting

Image 1. WB Suggested Anti-KLHDC1 Antibody Titration:

0.2-1 ug/ml

Positive Control: Hela cell lysate