

Datasheet for ABIN2785303  
**anti-CCDC78 antibody (Middle Region)**[Go to Product page](#)

## 1 Image

## Overview

Quantity:	100 µL
Target:	CCDC78
Binding Specificity:	Middle Region
Reactivity:	Human
Host:	Rabbit
Clonality:	Polyclonal
Conjugate:	This CCDC78 antibody is un-conjugated
Application:	Western Blotting (WB)

## Product Details

Immunogen:	The immunogen is a synthetic peptide directed towards the middle region of human CCDC78
Sequence:	QELRHKAQVP GHSDDRHFQV QPKNTMDPEN EQHRLGSGVS VQPPSSGERA
Predicted Reactivity:	Human: 93%
Characteristics:	This is a rabbit polyclonal antibody against CCDC78. It was validated on Western Blot using a cell lysate as a positive control.
Purification:	Affinity Purified

## Target Details

Target:	CCDC78
Alternative Name:	CCDC78 ( <a href="#">CCDC78 Products</a> )

## Target Details

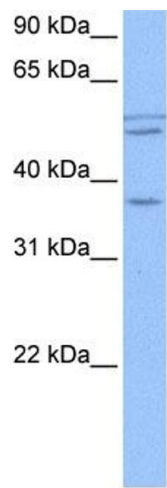
Background:	The exact function of CCDC78 remains unknown. Alias Symbols: C16orf25, FLJ34512, JFP10, LA16c-444G9.2 Protein Size: 347
Molecular Weight:	37 kDa
Gene ID:	124093
NCBI Accession:	<a href="#">NM_173476</a> , <a href="#">NP_775747</a>
UniProt:	<a href="#">A2IDD5</a>
Pathways:	<a href="#">Skeletal Muscle Fiber Development</a>

## Application Details

Application Notes:	Optimal working dilutions should be determined experimentally by the investigator.
Comment:	Antigen size: 347 AA
Restrictions:	For Research Use only

## Handling

Format:	Liquid
Concentration:	Lot specific
Buffer:	Liquid. Purified antibody supplied in 1x PBS buffer with 0.09 % (w/v) sodium azide and 2 % sucrose.
Preservative:	Sodium azide
Precaution of Use:	This product contains Sodium azide: a POISONOUS AND HAZARDOUS SUBSTANCE which should be handled by trained staff only.
Handling Advice:	Avoid repeated freeze-thaw cycles.
Storage:	-20 °C
Storage Comment:	For short term use, store at 2-8°C up to 1 week. For long term storage, store at -20°C in small aliquots to prevent freeze-thaw cycles.



**Western Blotting**

**Image 1. WB Suggested Anti-CCDC78 Antibody Titration:**

0.2-1 ug/ml

**Positive Control:** HepG2 cell lysate