

Datasheet for ABIN2785309

**anti-PIP5KL1 antibody (Middle Region)**[Go to Product page](#)**1** Image

## Overview

Quantity:	100 µL
Target:	PIP5KL1
Binding Specificity:	Middle Region
Reactivity:	Human, Pig, Cow, Dog, Horse, Rabbit
Host:	Rabbit
Clonality:	Polyclonal
Conjugate:	This PIP5KL1 antibody is un-conjugated
Application:	Western Blotting (WB)

## Product Details

Immunogen:	The immunogen is a synthetic peptide directed towards the middle region of human PIP5KL1
Sequence:	VLDYSLLI AF QRLHEDERGP GSSLIFRTAR SVQGAQSPEE SRAQNRLLP
Predicted Reactivity:	Cow: 79%, Dog: 92%, Horse: 79%, Human: 100%, Pig: 85%, Rabbit: 100%
Characteristics:	This is a rabbit polyclonal antibody against PIP5KL1. It was validated on Western Blot using a cell lysate as a positive control.
Purification:	Affinity Purified

## Target Details

Target:	PIP5KL1
Alternative Name:	PIP5KL1 ( <a href="#">PIP5KL1 Products</a> )

## Target Details

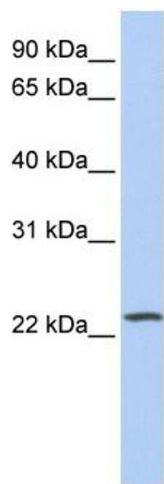
Background:	PIP5KL1 may act as a scaffold to localize and regulate type I PI(4)P 5-kinases to specific compartments within the cell, where they generate PI(4,5)P2 for actin nucleation, signaling and scaffold protein recruitment and conversion to PI(3,4,5)P3. Alias Symbols: MGC46424, PIPKH, RP11-203J24.5, bA203J24.5 Protein Interaction Partner: PIP5K1A, PIP5K1B, PIP5K1C, Protein Size: 191
Molecular Weight:	22 kDa
Gene ID:	138429
NCBI Accession:	<a href="#">NM_173492</a> , <a href="#">NP_775763</a>
Pathways:	<a href="#">Inositol Metabolic Process</a>

## Application Details

Application Notes:	Optimal working dilutions should be determined experimentally by the investigator.
Comment:	Antigen size: 191 AA
Restrictions:	For Research Use only

## Handling

Format:	Liquid
Concentration:	Lot specific
Buffer:	Liquid. Purified antibody supplied in 1x PBS buffer with 0.09 % (w/v) sodium azide and 2 % sucrose.
Preservative:	Sodium azide
Precaution of Use:	This product contains Sodium azide: a POISONOUS AND HAZARDOUS SUBSTANCE which should be handled by trained staff only.
Handling Advice:	Avoid repeated freeze-thaw cycles.
Storage:	-20 °C
Storage Comment:	For short term use, store at 2-8°C up to 1 week. For long term storage, store at -20°C in small aliquots to prevent freeze-thaw cycles.



**Western Blotting**

**Image 1. WB Suggested Anti-PIP5KL1 Antibody Titration:**

0.2-1 ug/ml

**Positive Control:** Human Lung