

Datasheet for ABIN2785312
anti-CCDC117 antibody (Middle Region)



[Go to Product page](#)

1 Image

Overview

Quantity:	100 µL
Target:	CCDC117
Binding Specificity:	Middle Region
Reactivity:	Human, Mouse, Cow, Rabbit, Dog, Rat, Guinea Pig, Horse, Saccharomyces cerevisiae
Host:	Rabbit
Clonality:	Polyclonal
Conjugate:	This CCDC117 antibody is un-conjugated
Application:	Western Blotting (WB)

Product Details

Sequence:	GLSIPGILDV ICEEMDQTTG EPQCEVARRK LQEIEDRIID EDEEVEADRN
Predicted Reactivity:	Cow: 100%, Dog: 100%, Guinea Pig: 100%, Horse: 100%, Human: 100%, Mouse: 100%, Rabbit: 100%, Rat: 100%, Yeast: 90%
Characteristics:	This is a rabbit polyclonal antibody against CCDC117. It was validated on Western Blot.
Purification:	Affinity Purified

Target Details

Target:	CCDC117
Alternative Name:	CCDC117 (CCDC117 Products)
Background:	The function of this protein remains unknown.

Target Details

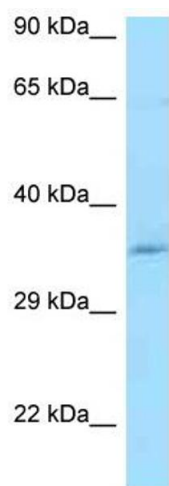
	Alias Symbols: FLJ33814, dJ366L4.1
	Protein Interaction Partner: STIP1, HSP90AB1, UBC, HSP90AA1, ELAVL1,
	Protein Size: 279
Molecular Weight:	30 kDa
Gene ID:	150275
NCBI Accession:	NM_173510 , NP_775781
UniProt:	Q8IWD4

Application Details

Application Notes:	Optimal working dilutions should be determined experimentally by the investigator.
Comment:	Antigen size: 279 AA
Restrictions:	For Research Use only

Handling

Format:	Liquid
Concentration:	Lot specific
Buffer:	Liquid. Purified antibody supplied in 1x PBS buffer with 0.09 % (w/v) sodium azide and 2 % sucrose.
Preservative:	Sodium azide
Precaution of Use:	This product contains Sodium azide: a POISONOUS AND HAZARDOUS SUBSTANCE which should be handled by trained staff only.
Handling Advice:	Avoid repeated freeze-thaw cycles.
Storage:	-20 °C
Storage Comment:	For short term use, store at 2-8°C up to 1 week. For long term storage, store at -20°C in small aliquots to prevent freeze-thaw cycles.



Western Blotting

Image 1. WB Suggested Anti-CCDC117 Antibody Titration:
1.0 ug/ml Positive Control: Hela Whole Cell