

Datasheet for ABIN2785320

**anti-C15orf26/CFAP161 antibody (C-Term)**[Go to Product page](#)**1** Image**1** Publication

## Overview

Quantity:	100 µL
Target:	C15orf26/CFAP161 (C15orf26)
Binding Specificity:	C-Term
Reactivity:	Human, Dog, Guinea Pig, Mouse, Pig, Cow, Horse
Host:	Rabbit
Clonality:	Polyclonal
Conjugate:	This C15orf26/CFAP161 antibody is un-conjugated
Application:	Western Blotting (WB)

## Product Details

Immunogen:	The immunogen is a synthetic peptide directed towards the C terminal region of human C15orf26
Sequence:	LINHCHTNRG LAAHRHLFLS TYFGKEAEVV AHTYLDSHRV EKPRNHWMLV
Predicted Reactivity:	Cow: 93%, Dog: 93%, Guinea Pig: 77%, Horse: 93%, Human: 100%, Mouse: 79%, Pig: 93%
Characteristics:	This is a rabbit polyclonal antibody against C15orf26. It was validated on Western Blot using a cell lysate as a positive control.
Purification:	Affinity Purified

## Target Details

Target:	C15orf26/CFAP161 (C15orf26)
---------	-----------------------------

## Target Details

Alternative Name:	C15orf26 ( <a href="#">C15orf26 Products</a> )
Background:	The exact function of C15orf26 remains unknown. Alias Symbols: FLJ38615 Protein Size: 301
Molecular Weight:	34 kDa
Gene ID:	161502
NCBI Accession:	<a href="#">NM_173528</a> , <a href="#">NP_775799</a>
UniProt:	<a href="#">Q6P656</a>

## Application Details

Application Notes:	Optimal working dilutions should be determined experimentally by the investigator.
Comment:	Antigen size: 301 AA
Restrictions:	For Research Use only

## Handling

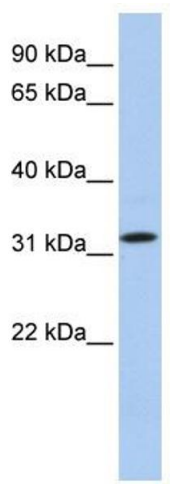
Format:	Liquid
Concentration:	Lot specific
Buffer:	Liquid. Purified antibody supplied in 1x PBS buffer with 0.09 % (w/v) sodium azide and 2 % sucrose.
Preservative:	Sodium azide
Precaution of Use:	This product contains Sodium azide: a POISONOUS AND HAZARDOUS SUBSTANCE which should be handled by trained staff only.
Handling Advice:	Avoid repeated freeze-thaw cycles.
Storage:	-20 °C
Storage Comment:	For short term use, store at 2-8°C up to 1 week. For long term storage, store at -20°C in small aliquots to prevent freeze-thaw cycles.

## Publications

Product cited in:	Li, Wu, Jiang, Liu, Wu, Inagaki, Izawa, Mizisin, Engvall, Shelton: "Non-pathogenic protein aggregates in skeletal muscle in MLF1 transgenic mice." in: <b>Journal of the neurological</b>
-------------------	---

**sciences**, Vol. 264, Issue 1-2, pp. 77-86, (2007) ([PubMed](#)).

Images



Western Blotting

**Image 1. WB Suggested Anti-C15orf26 Antibody Titration:**

0.2-1 ug/ml

**Positive Control:** 721\_B cell lysate