



[Go to Product page](#)

Datasheet for ABIN2785328
anti-TRAPPC5 antibody (N-Term)

1 Image

Overview

Quantity:	100 µL
Target:	TRAPPC5
Binding Specificity:	N-Term
Reactivity:	Human, Mouse, Rat, Cow, Dog, Guinea Pig, Zebrafish (Danio rerio)
Host:	Rabbit
Clonality:	Polyclonal
Conjugate:	This TRAPPC5 antibody is un-conjugated
Application:	Western Blotting (WB)

Product Details

Immunogen:	The immunogen is a synthetic peptide directed towards the N terminal region of human TRAPPC5
Sequence:	MEARFTRGKS ALLERALARP RTEVSLSAFA LLFSELVQHC QSRVFSVAEL
Predicted Reactivity:	Cow: 100%, Dog: 100%, Guinea Pig: 100%, Human: 100%, Mouse: 100%, Rat: 100%, Zebrafish: 85%
Characteristics:	This is a rabbit polyclonal antibody against TRAPPC5. It was validated on Western Blot.
Purification:	Affinity Purified

Target Details

Target:	TRAPPC5
---------	---------

Target Details

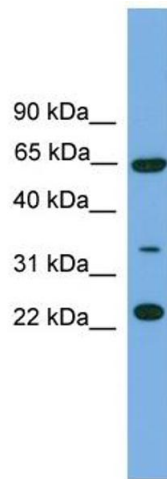
Alternative Name:	TRAPPC5 (TRAPPC5 Products)
Background:	TRAPPC5 may play a role in vesicular transport from endoplasmic reticulum to Golgi. Alias Symbols: MGC52424, TRS31 Protein Interaction Partner: CCNDBP1, RANBP17, ACAA1, A2M, TRAPPC3L, TRAPPC3, UBC, TRAPPC10, TRAPPC2, Protein Size: 188
Molecular Weight:	21 kDa
Gene ID:	126003
NCBI Accession:	NM_174894 , NP_777554
UniProt:	Q8IURO

Application Details

Application Notes:	Optimal working dilutions should be determined experimentally by the investigator.
Comment:	Antigen size: 188 AA
Restrictions:	For Research Use only

Handling

Format:	Liquid
Concentration:	Lot specific
Buffer:	Liquid. Purified antibody supplied in 1x PBS buffer with 0.09 % (w/v) sodium azide and 2 % sucrose.
Preservative:	Sodium azide
Precaution of Use:	This product contains Sodium azide: a POISONOUS AND HAZARDOUS SUBSTANCE which should be handled by trained staff only.
Handling Advice:	Avoid repeated freeze-thaw cycles.
Storage:	-20 °C
Storage Comment:	For short term use, store at 2-8°C up to 1 week. For long term storage, store at -20°C in small aliquots to prevent freeze-thaw cycles.



Western Blotting

Image 1. WB Suggested Anti-TRAPPC5 Antibody Titration:
0.2-1 ug/ml ELISA Titer: 1:1562500 Positive Control: HeLa cell lysate