

Datasheet for ABIN2785332

anti-LDLRAD3 antibody (Middle Region)

2 Images

[Go to Product page](#)

Overview

Quantity:	100 µL
Target:	LDLRAD3
Binding Specificity:	Middle Region
Reactivity:	Human, Mouse, Rat, Cow, Dog, Guinea Pig, Horse, Rabbit
Host:	Rabbit
Clonality:	Polyclonal
Conjugate:	This LDLRAD3 antibody is un-conjugated
Application:	Western Blotting (WB)

Product Details

Immunogen:	The immunogen is a synthetic peptide directed towards the middle region of human LDLRAD3
Sequence:	DEESCESSQE PGSGQVFVTS ENQLVYYPSI TYAIGSSVI FVLVVALLAL
Predicted Reactivity:	Cow: 100%, Dog: 100%, Guinea Pig: 100%, Horse: 100%, Human: 100%, Mouse: 100%, Rabbit: 100%, Rat: 100%
Characteristics:	This is a rabbit polyclonal antibody against LDLRAD3. It was validated on Western Blot.
Purification:	Affinity Purified

Target Details

Target:	LDLRAD3
Alternative Name:	LDLRAD3 (LDLRAD3 Products)

Target Details

Background: The function of this protein remains unknown.
Alias Symbols: LRAD3
Protein Interaction Partner: ELAVL1,
Protein Size: 345

Molecular Weight: 37 kDa

Gene ID: 143458

NCBI Accession: [NM_174902](#), [NP_777562](#)

UniProt: [A2AR95](#)

Application Details

Application Notes: Optimal working dilutions should be determined experimentally by the investigator.

Comment: Antigen size: 345 AA

Restrictions: For Research Use only

Handling

Format: Liquid

Concentration: Lot specific

Buffer: Liquid. Purified antibody supplied in 1x PBS buffer with 0.09 % (w/v) sodium azide and 2 % sucrose.

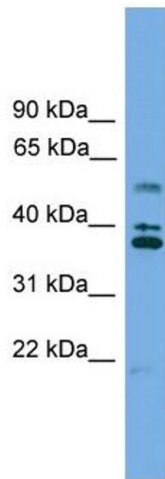
Preservative: Sodium azide

Precaution of Use: This product contains Sodium azide: a POISONOUS AND HAZARDOUS SUBSTANCE which should be handled by trained staff only.

Handling Advice: Avoid repeated freeze-thaw cycles.

Storage: -20 °C

Storage Comment: For short term use, store at 2-8°C up to 1 week. For long term storage, store at -20°C in small aliquots to prevent freeze-thaw cycles.

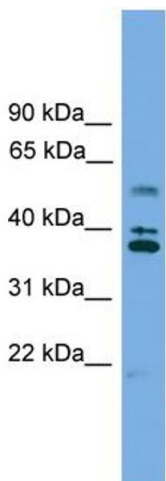


Western Blotting

Image 1. WB Suggested Anti-LDLRAD3 Antibody Titration:

0.2-1 ug/ml

Positive Control: 721_B cell lysate



Rabbit Anti-LDLRAD3 Antibody
Catalog Number: ARP53301
Lot Number: QC29200
Lane: 721_B Cell Lysate

Antibody Titration: 1.0µg/ml
Gel Concentration: 12%

Western Blotting

Image 2. WB Suggested Anti-LDLRAD3

Antibody Titration: 0.2-1 µg/mL

Positive Control: 21_B cell lysate