

Datasheet for ABIN2785346  
**anti-SPPL2C antibody (Middle Region)**[Go to Product page](#)

## 2 Images

## Overview

Quantity:	100 µL
Target:	SPPL2C
Binding Specificity:	Middle Region
Reactivity:	Human, Saccharomyces cerevisiae
Host:	Rabbit
Clonality:	Polyclonal
Conjugate:	This SPPL2C antibody is un-conjugated
Application:	Western Blotting (WB)

## Product Details

Immunogen:	The immunogen is a synthetic peptide directed towards the middle region of human IMP5
Sequence:	NPGEDTTEIV TISENEATNP EDRSDSSEGW SDAHLDPNEL PFIPPGASEE
Predicted Reactivity:	Human: 100%, Yeast: 75%
Characteristics:	This is a rabbit polyclonal antibody against IMP5. It was validated on Western Blot using a cell lysate as a positive control.
Purification:	Affinity Purified

## Target Details

Target:	SPPL2C
Alternative Name:	IMP5 ( <a href="#">SPPL2C Products</a> )

## Target Details

Background:	IMP5 may act as intramembrane protease. Alias Symbols: SPPL2c, IMP5 Protein Size: 684
-------------	---

Molecular Weight:	74 kDa
-------------------	--------

Gene ID:	162540
----------	--------

NCBI Accession:	<a href="#">NM_175882</a> , <a href="#">NP_787078</a>
-----------------	---

UniProt:	<a href="#">Q8IUH8</a>
----------	------------------------

## Application Details

Application Notes:	Optimal working dilutions should be determined experimentally by the investigator.
--------------------	--

Comment:	Antigen size: 684 AA
----------	----------------------

Restrictions:	For Research Use only
---------------	-----------------------

## Handling

Format:	Liquid
---------	--------

Concentration:	Lot specific
----------------	--------------

Buffer:	Liquid. Purified antibody supplied in 1x PBS buffer with 0.09 % (w/v) sodium azide and 2 % sucrose.
---------	---

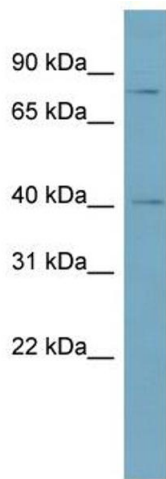
Preservative:	Sodium azide
---------------	--------------

Precaution of Use:	This product contains Sodium azide: a POISONOUS AND HAZARDOUS SUBSTANCE which should be handled by trained staff only.
--------------------	--

Handling Advice:	Avoid repeated freeze-thaw cycles.
------------------	------------------------------------

Storage:	-20 °C
----------	--------

Storage Comment:	For short term use, store at 2-8°C up to 1 week. For long term storage, store at -20°C in small aliquots to prevent freeze-thaw cycles.
------------------	---

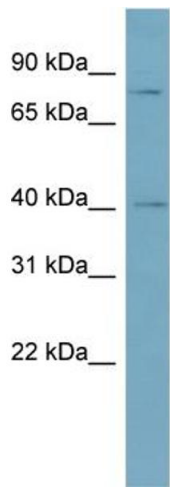


**Western Blotting**

**Image 1. WB Suggested Anti-IMP5 Antibody Titration:** 0.2-1 ug/ml

**ELISA Titer:** 1:62500

**Positive Control:** Human Thymus



**Rabbit Anti-IMP5 Antibody**  
**Catalog Number:** ARP53336  
**Lot Number:** QC23461  
**Lane:** Fetal Thymus Lysate

**Antibody Titration:** 1.0µg/ml  
**Gel Concentration:** 12%

**Western Blotting**

**Image 2. WB Suggested Anti-IMP5**

**Antibody Titration:** 0.2-1 µg/mL **ELISA Titer:** 1::2500

**Positive Control:** Human Thymus