

Datasheet for ABIN2785349
anti-DHFRL1 antibody (Middle Region)[Go to Product page](#)

1 Image

Overview

Quantity:	100 µL
Target:	DHFRL1
Binding Specificity:	Middle Region
Reactivity:	Human, Mouse, Dog, Horse, Rabbit, Rat, Cow, Guinea Pig
Host:	Rabbit
Clonality:	Polyclonal
Conjugate:	This DHFRL1 antibody is un-conjugated
Application:	Western Blotting (WB)

Product Details

Immunogen:	The immunogen is a synthetic peptide directed towards the middle region of human DHFRL1
Sequence:	RINLVLSREL KEPPQGAHFL ARSLDDALKL TERPELANKV DMIWIVGGSS
Predicted Reactivity:	Cow: 92%, Dog: 93%, Guinea Pig: 93%, Horse: 92%, Human: 100%, Mouse: 92%, Rabbit: 86%, Rat: 93%
Characteristics:	This is a rabbit polyclonal antibody against DHFRL1. It was validated on Western Blot using a cell lysate as a positive control.
Purification:	Affinity Purified

Target Details

Target:	DHFRL1
---------	--------

Target Details

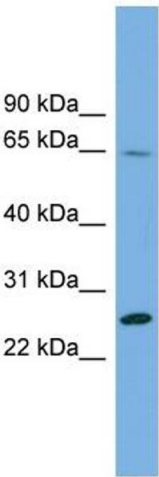
Alternative Name:	DHFRL1 (DHFRL1 Products)
Background:	DHFRL1 may play a role in folate metabolism. Alias Symbols: DHFRP4, FLJ16119 Protein Interaction Partner: TINF2, Protein Size: 187
Molecular Weight:	21 kDa
Gene ID:	200895
NCBI Accession:	NM_176815 , NP_789785
UniProt:	Q86XF0
Pathways:	Ribonucleoside Biosynthetic Process

Application Details

Application Notes:	Optimal working dilutions should be determined experimentally by the investigator.
Comment:	Antigen size: 187 AA
Restrictions:	For Research Use only

Handling

Format:	Liquid
Concentration:	Lot specific
Buffer:	Liquid. Purified antibody supplied in 1x PBS buffer with 0.09 % (w/v) sodium azide and 2 % sucrose.
Preservative:	Sodium azide
Precaution of Use:	This product contains Sodium azide: a POISONOUS AND HAZARDOUS SUBSTANCE which should be handled by trained staff only.
Handling Advice:	Avoid repeated freeze-thaw cycles.
Storage:	-20 °C
Storage Comment:	For short term use, store at 2-8°C up to 1 week. For long term storage, store at -20°C in small aliquots to prevent freeze-thaw cycles.



Western Blotting

Image 1. WB Suggested Anti-DHFRL1 Antibody Titration:
0.2-1 ug/ml ELISA Titer: 1:312500 Positive Control: THP-1
cell lysate