

Datasheet for ABIN2785351
anti-KLC3 antibody (Middle Region)[Go to Product page](#)

1 Image

Overview

Quantity:	100 µL
Target:	KLC3
Binding Specificity:	Middle Region
Reactivity:	Human, Mouse, Rat, Dog, Guinea Pig, Cow
Host:	Rabbit
Clonality:	Polyclonal
Conjugate:	This KLC3 antibody is un-conjugated
Application:	Western Blotting (WB)

Product Details

Immunogen:	The immunogen is a synthetic peptide directed towards the middle region of human KLC3
Sequence:	MLNILALVYR DQNKYKEATD LLHDALQIRE QTLGPEHPAV AATLNNLAVL
Predicted Reactivity:	Cow: 100%, Dog: 100%, Guinea Pig: 100%, Human: 100%, Mouse: 100%, Rat: 100%
Characteristics:	This is a rabbit polyclonal antibody against KLC3. It was validated on Western Blot using a cell lysate as a positive control.
Purification:	Affinity Purified

Target Details

Target:	KLC3
Alternative Name:	KLC3 (KLC3 Products)

Target Details

Background:	<p>KLC3 is a member of the kinesin light chain gene family. Kinesins are molecular motors involved in the transport of cargo along microtubules, and are composed of two kinesin heavy chain (KHC) and two kinesin light chain (KLC) molecules. KLCs are thought to typically be involved in binding cargo and regulating kinesin activity. In the rat, a protein similar to this gene product is expressed in post-meiotic spermatids, where it associates with structural components of sperm tails and mitochondria. This gene encodes a member of the kinesin light chain gene family. Kinesins are molecular motors involved in the transport of cargo along microtubules, and are composed of two kinesin heavy chain (KHC) and two kinesin light chain (KLC) molecules. KLCs are thought to typically be involved in binding cargo and regulating kinesin activity. In the rat, a protein similar to this gene product is expressed in post-meiotic spermatids, where it associates with structural components of sperm tails and mitochondria.</p> <p>Alias Symbols: KLC2, KLC2L, KLCt, KNS2B</p> <p>Protein Interaction Partner: CENPP, CCDC36, CEP57L1, SPERT, KLC3, ZNF417, CCDC64B, ZNF572, BBS5, SNAP47, DTX2, USHBP1, IMP3, NECAB2, MBIP, WAC, ABI3, KDM1A, NDC80, PDE4DIP, STX11, TSNAX, TCF4, VPS52, QARS, KRT15, KRT13, GEM, CCNH, YWHAE, DYNC111, CUL2, CROCC, KIF5A, KIF5B, YWHAG, YWH</p> <p>Protein Size: 504</p>
-------------	--

Molecular Weight:	55 kDa
-------------------	--------

Gene ID:	147700
----------	--------

NCBI Accession:	NM_177417 , NP_803136
-----------------	---

UniProt:	Q6P597
----------	------------------------

Application Details

Application Notes:	Optimal working dilutions should be determined experimentally by the investigator.
--------------------	--

Comment:	Antigen size: 504 AA
----------	----------------------

Restrictions:	For Research Use only
---------------	-----------------------

Handling

Format:	Liquid
---------	--------

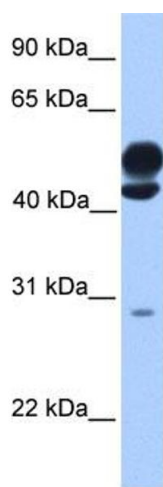
Concentration:	Lot specific
----------------	--------------

Buffer:	Liquid. Purified antibody supplied in 1x PBS buffer with 0.09 % (w/v) sodium azide and 2 % sucrose.
---------	---

Handling

Preservative:	Sodium azide
Precaution of Use:	This product contains Sodium azide: a POISONOUS AND HAZARDOUS SUBSTANCE which should be handled by trained staff only.
Handling Advice:	Avoid repeated freeze-thaw cycles.
Storage:	-20 °C
Storage Comment:	For short term use, store at 2-8°C up to 1 week. For long term storage, store at -20°C in small aliquots to prevent freeze-thaw cycles.

Images



Western Blotting

Image 1. WB Suggested Anti-KLC3 Antibody Titration: 0.2-1 ug/ml
Positive Control: Human brain