

Datasheet for ABIN2785355
anti-PDE12 antibody (Middle Region)



[Go to Product page](#)

1 Image

Overview

Quantity:	100 µL
Target:	PDE12
Binding Specificity:	Middle Region
Reactivity:	Human, Mouse, Rat, Cow, Guinea Pig, Horse, Dog, Rabbit
Host:	Rabbit
Clonality:	Polyclonal
Conjugate:	This PDE12 antibody is un-conjugated
Application:	Western Blotting (WB)

Product Details

Immunogen:	The immunogen is a synthetic peptide directed towards the middle region of human 2'-PDE
Sequence:	CLDYIFIDLN ALEVEQVIPL PSHEEVTTHQ ALPSVSHPSD HIALVCDLKW
Predicted Reactivity:	Cow: 100%, Dog: 100%, Guinea Pig: 100%, Horse: 100%, Human: 100%, Mouse: 100%, Rabbit: 100%, Rat: 100%
Characteristics:	This is a rabbit polyclonal antibody against 2'-PDE. It was validated on Western Blot using a cell lysate as a positive control.
Purification:	Affinity Purified

Target Details

Target:	PDE12
---------	-------

Target Details

Alternative Name:	PDE12 (PDE12 Products)
Background:	<p>2'-PDE is an enzyme that cleaves 2',5'-phosphodiester bond linking adenosines of the 5'-triphosphorylated oligoadenylates, triphosphorylated oligoadenylates referred as 2-5A modulates the 2-5A system. This enzyme degraded triphosphorylated 2-5A to produce AMP and ATP. 2'-PDE also cleaves 3',5'-phosphodiester bond of oligoadenylates. 2'-PDE play a role as a negative regulator of the 2-5A system that is one of the major pathways for antiviral and antitumor functions induced by interferons (IFNs). Suppression of this enzyme induces reduction of viral replication in Hela cells, thus counteracting the antiviral pathway probably by inhibiting the 2-5A system.</p> <p>Alias Symbols: 2'-PDE</p> <p>Protein Interaction Partner: SUMO2, SUMO1, UBC, NEDD8, DCTPP1, NPLOC4, UBQLN2, EHD1, WDR4, PDLIM5, SAE1, UBA2, CUL5, XPNPEP1, STAT6, RAD23B, PGGT1B, DNAJB1, ADSL, APEX2, COPS5, CUL3, UBL4A,</p> <p>Protein Size: 609</p>
Molecular Weight:	67 kDa
Gene ID:	201626
NCBI Accession:	NM_177966 , NP_808881
UniProt:	Q6L8Q7

Application Details

Application Notes:	Optimal working dilutions should be determined experimentally by the investigator.
Comment:	Antigen size: 609 AA
Restrictions:	For Research Use only

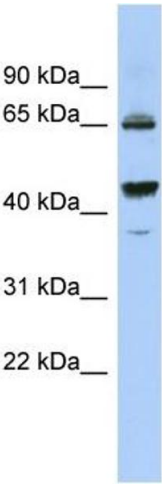
Handling

Format:	Liquid
Concentration:	Lot specific
Buffer:	Liquid. Purified antibody supplied in 1x PBS buffer with 0.09 % (w/v) sodium azide and 2 % sucrose.
Preservative:	Sodium azide
Precaution of Use:	This product contains Sodium azide: a POISONOUS AND HAZARDOUS SUBSTANCE which

Handling

	should be handled by trained staff only.
Handling Advice:	Avoid repeated freeze-thaw cycles.
Storage:	-20 °C
Storage Comment:	For short term use, store at 2-8°C up to 1 week. For long term storage, store at -20°C in small aliquots to prevent freeze-thaw cycles.

Images



Western Blotting

Image 1. WB Suggested Anti-PDE12 Antibody Titration:

0.2-1 ug/ml

ELISA Titer: 1:1562500

Positive Control: OVCAR-3 cell lysate