

Datasheet for ABIN2785359

anti-Parathyroid Hormone 2 (PTH2) (Middle Region) antibody[Go to Product page](#)**1** Image

Overview

Quantity:	100 µL
Target:	Parathyroid Hormone 2 (PTH2)
Binding Specificity:	Middle Region
Reactivity:	Human, Mouse, Rat, Cow, Dog, Guinea Pig, Horse, Rabbit
Host:	Rabbit
Clonality:	Polyclonal
Conjugate:	Un-conjugated
Application:	Western Blotting (WB)

Product Details

Immunogen:	The immunogen is a synthetic peptide directed towards the middle region of human PTH2
Sequence:	WADPATPRPR RSLALADDAA FRERARLLAA LERRHWLNSY MHKLLVLDAP
Predicted Reactivity:	Cow: 100%, Dog: 100%, Guinea Pig: 100%, Horse: 100%, Human: 100%, Mouse: 100%, Rabbit: 93%, Rat: 100%
Characteristics:	This is a rabbit polyclonal antibody against PTH2. It was validated on Western Blot using a cell lysate as a positive control.
Purification:	Affinity Purified

Target Details

Target:	Parathyroid Hormone 2 (PTH2)
---------	------------------------------

Target Details

Alternative Name:	PTH2 (PTH2 Products)
Background:	<p>TIP39 is related to parathyroid hormone (PTH) and PTH-related protein (PTHrP) and is a ligand for PTH receptor-2. TIP39 is related to parathyroid hormone (PTH, MIM 168450) and PTH-related protein (PTHrP, MIM 168470) and is a ligand for PTH receptor-2 (PTHr2, MIM 601469) (John et al., 2002 [PubMed 11861531]). [supplied by OMIM].</p> <p>Alias Symbols: TIP39</p> <p>Protein Interaction Partner: PTH2, PTH2R,</p> <p>Protein Size: 100</p>
Molecular Weight:	11 kDa
Gene ID:	113091
NCBI Accession:	NM_178449 , NP_848544
UniProt:	Q96A98
Pathways:	Sensory Perception of Sound , cAMP Metabolic Process , Regulation of Muscle Cell Differentiation , Tube Formation , Skeletal Muscle Fiber Development

Application Details

Application Notes:	Optimal working dilutions should be determined experimentally by the investigator.
Comment:	Antigen size: 100 AA
Restrictions:	For Research Use only

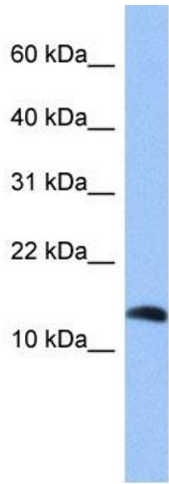
Handling

Format:	Liquid
Concentration:	Lot specific
Buffer:	Liquid. Purified antibody supplied in 1x PBS buffer with 0.09 % (w/v) sodium azide and 2 % sucrose.
Preservative:	Sodium azide
Precaution of Use:	This product contains Sodium azide: a POISONOUS AND HAZARDOUS SUBSTANCE which should be handled by trained staff only.
Handling Advice:	Avoid repeated freeze-thaw cycles.
Storage:	-20 °C

Handling

Storage Comment: For short term use, store at 2-8°C up to 1 week. For long term storage, store at -20°C in small aliquots to prevent freeze-thaw cycles.

Images



Western Blotting

Image 1. WB Suggested Anti-PTH2 Antibody Titration:
0.2-1 ug/ml

Positive Control: HepG2 cell lysate