

Datasheet for ABIN2785360
anti-LRRC50 antibody (N-Term)

3 Images

3 Publications

[Go to Product page](#)

Overview

Quantity:	100 µL
Target:	LRRC50
Binding Specificity:	N-Term
Reactivity:	Human, Rat, Mouse, Dog, Cow, Guinea Pig, Horse, Zebrafish (Danio rerio)
Host:	Rabbit
Clonality:	Polyclonal
Conjugate:	This LRRC50 antibody is un-conjugated
Application:	Western Blotting (WB)

Product Details

Immunogen:	The immunogen is a synthetic peptide directed towards the N terminal region of human LRRC50
Sequence:	LNDTLYLHFK GFDRIENLEE YTGLRCLWLQ SNGIQKIENL EAQTELRCLF
Predicted Reactivity:	Cow: 93%, Dog: 93%, Guinea Pig: 93%, Horse: 100%, Human: 100%, Mouse: 100%, Rat: 100%, Zebrafish: 79%
Characteristics:	This is a rabbit polyclonal antibody against LRRC50. It was validated on Western Blot using a cell lysate as a positive control.
Purification:	Affinity Purified

Target Details

Target:	LRRC50
---------	--------

Target Details

Alternative Name:	LRRC50 (LRRC50 Products)
Background:	<p>LRRC50 contains 6 LRR (leucine-rich) repeats. It is proposed that LRRC50 to be a novel candidate gene for human cystic kidney disease, involved in regulation of microtubule-based cilia and actin-based brush border microvilli.</p> <p>Alias Symbols: DKFZp434A119, FLJ25330, ODA7, CILD13, LRRC50</p> <p>Protein Interaction Partner: UBC,</p> <p>Protein Size: 725</p>
Molecular Weight:	80 kDa
Gene ID:	123872
NCBI Accession:	NM_178452 , NP_848547
UniProt:	Q8NEP3

Application Details

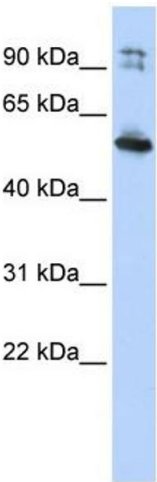
Application Notes:	Optimal working dilutions should be determined experimentally by the investigator.
Comment:	Antigen size: 725 AA
Restrictions:	For Research Use only

Handling

Format:	Liquid
Concentration:	Lot specific
Buffer:	Liquid. Purified antibody supplied in 1x PBS buffer with 0.09 % (w/v) sodium azide and 2 % sucrose.
Preservative:	Sodium azide
Precaution of Use:	This product contains Sodium azide: a POISONOUS AND HAZARDOUS SUBSTANCE which should be handled by trained staff only.
Handling Advice:	Avoid repeated freeze-thaw cycles.
Storage:	-20 °C
Storage Comment:	For short term use, store at 2-8°C up to 1 week. For long term storage, store at -20°C in small aliquots to prevent freeze-thaw cycles.

Product cited in: Ewing, Chu, Elisma, Li, Taylor, Climie, McBroom-Cerajewski, Robinson, OConnor, Li, Taylor, Dharsee, Ho, Heilbut, Moore, Zhang, Ornatsky, Bukhman, Ethier, Sheng, Vasilescu, Abu-Farha, Lambert, Duewel et al.: "Large-scale mapping of human protein-protein interactions by mass spectrometry. ..." in: **Molecular systems biology**, Vol. 3, pp. 89, (2007) ([PubMed](#)).

Images



Western Blotting

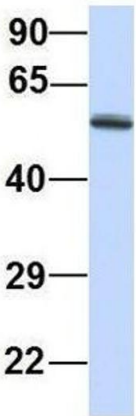
Image 1. WB Suggested Anti-LRRC50 Antibody Titration:

0.2-1 ug/ml

ELISA Titer: 1:1562500

Positive Control: HepG2 cell lysate

DNAAF1



Rabbit Anti-DNAAF1
Sample Type: Human Fetal Lung
Antibody Concentration: 1ug/mL

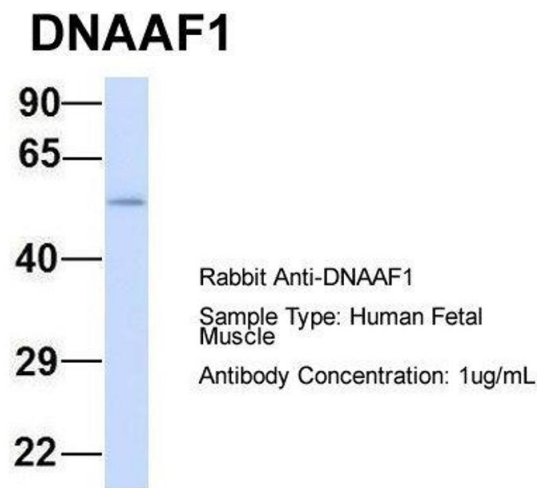
Western Blotting

Image 2. Host: Rabbit

Target Name: DNAAF1

Sample Tissue: Human Fetal Lung

Antibody Dilution: 1.0 µg/mL



Western Blotting

Image 3. Host: Rabbit
Target Name: DNAAF1
Sample Tissue: Human Fetal Muscle
Antibody Dilution: 1.0 µg/mL