



[Go to Product page](#)

Datasheet for ABIN2785363

## anti-CCDC60 antibody (C-Term)

1 Image

1 Publication

### Overview

Quantity:	100 µL
Target:	CCDC60
Binding Specificity:	C-Term
Reactivity:	Rat, Mouse, Human, Cow, Dog, Horse, Pig, Rabbit, Guinea Pig
Host:	Rabbit
Clonality:	Polyclonal
Conjugate:	This CCDC60 antibody is un-conjugated
Application:	Western Blotting (WB)

### Product Details

Immunogen:	The immunogen is a synthetic peptide directed towards the C terminal region of human CCDC60
Sequence:	RPAKKILVKL QKFGENLDLR IRPHVLLKVL QDLRIWELCS PDIAVAIEFV
Predicted Reactivity:	Cow: 100%, Dog: 100%, Guinea Pig: 93%, Horse: 100%, Human: 100%, Mouse: 100%, Pig: 100%, Rabbit: 100%, Rat: 100%
Characteristics:	This is a rabbit polyclonal antibody against CCDC60. It was validated on Western Blot using a cell lysate as a positive control.
Purification:	Affinity Purified

### Target Details

Target:	CCDC60
---------	--------

## Target Details

---

Alternative Name:	CCDC60 ( <a href="#">CCDC60 Products</a> )
Background:	The exact function of CCDC60 remains unknown. Alias Symbols: MGC39827 Protein Interaction Partner: MTUS2, APP, Protein Size: 550
Molecular Weight:	63 kDa
Gene ID:	160777
NCBI Accession:	<a href="#">NM_178499</a> , <a href="#">NP_848594</a>
UniProt:	<a href="#">Q8IWA6</a>

## Application Details

---

Application Notes:	Optimal working dilutions should be determined experimentally by the investigator.
Comment:	Antigen size: 550 AA
Restrictions:	For Research Use only

## Handling

---

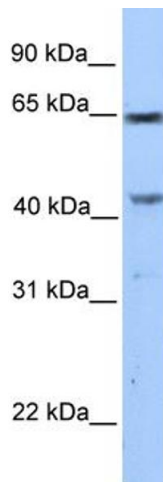
Format:	Liquid
Concentration:	Lot specific
Buffer:	Liquid. Purified antibody supplied in 1x PBS buffer with 0.09 % (w/v) sodium azide and 2 % sucrose.
Preservative:	Sodium azide
Precaution of Use:	This product contains Sodium azide: a POISONOUS AND HAZARDOUS SUBSTANCE which should be handled by trained staff only.
Handling Advice:	Avoid repeated freeze-thaw cycles.
Storage:	-20 °C
Storage Comment:	For short term use, store at 2-8°C up to 1 week. For long term storage, store at -20°C in small aliquots to prevent freeze-thaw cycles.

## Publications

---

Product cited in: Li, Wu, Jiang, Liu, Wu, Inagaki, Izawa, Mizisin, Engvall, Shelton: "Non-pathogenic protein

aggregates in skeletal muscle in MLF1 transgenic mice." in: **Journal of the neurological sciences**, Vol. 264, Issue 1-2, pp. 77-86, (2007) ([PubMed](#)).



#### Western Blotting

##### Image 1. WB Suggested Anti-CCDC60 Antibody Titration:

0.2-1 ug/ml

**Positive Control:** MCF7 cell lysate