

Datasheet for ABIN2785369
anti-Layilin antibody (N-Term)[Go to Product page](#)

1 Image

Overview

Quantity:	100 µL
Target:	Layilin (LAYN)
Binding Specificity:	N-Term
Reactivity:	Human, Rat, Guinea Pig, Cow, Dog, Horse, Rabbit
Host:	Rabbit
Clonality:	Polyclonal
Conjugate:	This Layilin antibody is un-conjugated
Application:	Western Blotting (WB)

Product Details

Immunogen:	The immunogen is a synthetic peptide directed towards the N terminal region of human LAYN
Sequence:	CYKVIYFHDT SRRLNFEEAK EACRRDGGQL VSIESEDEQK LIEKFIENTLL
Predicted Reactivity:	Cow: 91%, Dog: 92%, Guinea Pig: 85%, Horse: 92%, Human: 100%, Rabbit: 93%, Rat: 86%, Mouse: 79%,
Characteristics:	This is a rabbit polyclonal antibody against LAYN. It was validated on Western Blot using a cell lysate as a positive control.
Purification:	Affinity Purified

Target Details

Target:	Layilin (LAYN)
---------	----------------

Target Details

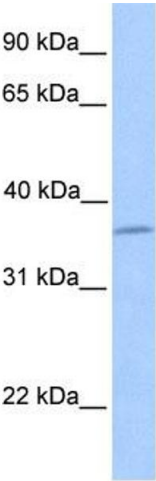
Alternative Name:	LAYN (LAYN Products)
Background:	LAYN contains 1 C-type lectin domain. It is the receptor for hyaluronate. Alias Symbols: FLJ30977, FLJ31092 Protein Interaction Partner: UBC, Protein Size: 374
Molecular Weight:	42 kDa
Gene ID:	143903
NCBI Accession:	NM_178834 , NP_849156

Application Details

Application Notes:	Optimal working dilutions should be determined experimentally by the investigator.
Comment:	Antigen size: 374 AA
Restrictions:	For Research Use only

Handling

Format:	Liquid
Concentration:	Lot specific
Buffer:	Liquid. Purified antibody supplied in 1x PBS buffer with 0.09 % (w/v) sodium azide and 2 % sucrose.
Preservative:	Sodium azide
Precaution of Use:	This product contains Sodium azide: a POISONOUS AND HAZARDOUS SUBSTANCE which should be handled by trained staff only.
Handling Advice:	Avoid repeated freeze-thaw cycles.
Storage:	-20 °C
Storage Comment:	For short term use, store at 2-8°C up to 1 week. For long term storage, store at -20°C in small aliquots to prevent freeze-thaw cycles.



Western Blotting

Image 1. WB Suggested Anti-LAYN Antibody Titration:
0.2-1 ug/ml

Positive Control: MCF7 cell lysate