



[Go to Product page](#)

Datasheet for ABIN2785387

anti-1110059E24Rik antibody (N-Term)

1 Image

Overview

Quantity:	100 µL
Target:	1110059E24Rik (1110059E24RIK)
Binding Specificity:	N-Term
Reactivity:	Cow, Dog, Horse, Human, Mouse, Rat, Guinea Pig, Rabbit, Pig
Host:	Rabbit
Clonality:	Polyclonal
Conjugate:	This 1110059E24Rik antibody is un-conjugated
Application:	Western Blotting (WB)

Product Details

Sequence:	TFKNDKFDKS VQTKKINAKL HDGVCQRCKE VLEWRVKYSK YKPLSKPKKC
Predicted Reactivity:	Cow: 100%, Dog: 100%, Guinea Pig: 93%, Horse: 100%, Human: 100%, Mouse: 100%, Pig: 100%, Rabbit: 85%, Rat: 100%
Characteristics:	This is a rabbit polyclonal antibody against 1110059E24Rik. It was validated on Western Blot.
Purification:	Affinity Purified

Target Details

Target:	1110059E24Rik (1110059E24RIK)
Alternative Name:	1110059E24Rik (1110059E24RIK Products)
Background:	The function of this protein remains unknown.

Target Details

Alias Symbols: -

Protein Size: 155

Molecular Weight: 18 kDa

Gene ID: 66206

NCBI Accession: [NM_025423](#), [NP_079699](#)

UniProt: [Q9CQ90](#)

Application Details

Application Notes: Optimal working dilutions should be determined experimentally by the investigator.

Comment: Antigen size: 155 AA

Restrictions: For Research Use only

Handling

Format: Liquid

Concentration: Lot specific

Buffer: Liquid. Purified antibody supplied in 1x PBS buffer with 0.09 % (w/v) sodium azide and 2 % sucrose.

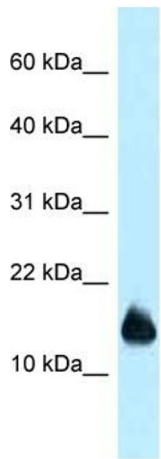
Preservative: Sodium azide

Precaution of Use: This product contains Sodium azide: a POISONOUS AND HAZARDOUS SUBSTANCE which should be handled by trained staff only.

Handling Advice: Avoid repeated freeze-thaw cycles.

Storage: -20 °C

Storage Comment: For short term use, store at 2-8°C up to 1 week. For long term storage, store at -20°C in small aliquots to prevent freeze-thaw cycles.



Rabbit Anti-1110059E24Rik Antibody
Catalog Number: ARP53424
Lot Number: QC23119
Lane: Mouse Heart Lysate

Antibody Titration: 1.0µg/ml
Gel Concentration: 10-20%

Western Blotting

Image 1.