

Datasheet for ABIN2785389
anti-THAP5 antibody (Middle Region)[Go to Product page](#)

1 Image

Overview

Quantity:	100 µL
Target:	THAP5
Binding Specificity:	Middle Region
Reactivity:	Human, Horse, Pig, Rat
Host:	Rabbit
Clonality:	Polyclonal
Conjugate:	This THAP5 antibody is un-conjugated
Application:	Western Blotting (WB)

Product Details

Immunogen:	The immunogen is a synthetic peptide directed towards the middle region of human THAP5
Sequence:	TTITLTTSNS ESIHQSLQ EVLEVTTS HL ANPNFTS NSM EIKSAQENPF
Predicted Reactivity:	Horse: 86%, Human: 100%, Pig: 79%, Rat: 79%
Characteristics:	This is a rabbit polyclonal antibody against THAP5 . It was validated on Western Blot using a cell lysate as a positive control.
Purification:	Affinity Purified

Target Details

Target:	THAP5
Alternative Name:	THAP5 (THAP5 Products)

Target Details

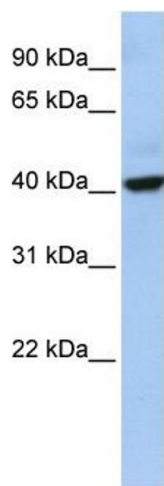
Background:	THAP5 contains 1 THAP-type zinc finger. The exact function of THAP5 remains unknown. Protein Interaction Partner: SKIL, UBC, FAM175B, Protein Size: 395
Molecular Weight:	44 kDa
Gene ID:	168451
NCBI Accession:	NM_001130475 , NP_001123947
UniProt:	Q7Z6K1

Application Details

Application Notes:	Optimal working dilutions should be determined experimentally by the investigator.
Comment:	Antigen size: 395 AA
Restrictions:	For Research Use only

Handling

Format:	Liquid
Concentration:	Lot specific
Buffer:	Liquid. Purified antibody supplied in 1x PBS buffer with 0.09 % (w/v) sodium azide and 2 % sucrose.
Preservative:	Sodium azide
Precaution of Use:	This product contains Sodium azide: a POISONOUS AND HAZARDOUS SUBSTANCE which should be handled by trained staff only.
Handling Advice:	Avoid repeated freeze-thaw cycles.
Storage:	-20 °C
Storage Comment:	For short term use, store at 2-8°C up to 1 week. For long term storage, store at -20°C in small aliquots to prevent freeze-thaw cycles.



Western Blotting

Image 1. WB Suggested Anti-THAP5 Antibody Titration:

0.2-1 ug/ml

ELISA Titer: 1:312500

Positive Control: Human Placenta