

Datasheet for ABIN2785395
anti-XRRA1 antibody (N-Term)[Go to Product page](#)

1 Image

Overview

Quantity:	100 µL
Target:	XRRA1
Binding Specificity:	N-Term
Reactivity:	Human, Rabbit, Cow, Dog, Guinea Pig, Horse, Rat
Host:	Rabbit
Clonality:	Polyclonal
Conjugate:	This XRRA1 antibody is un-conjugated
Application:	Western Blotting (WB)

Product Details

Immunogen:	The immunogen is a synthetic peptide directed towards the N terminal region of human XRRA1
Sequence:	MAFSGIYKLD DGKPYLNNCF PARNLLRVPE EGQGHWLVVQ KGNLKKKPKG
Predicted Reactivity:	Cow: 83%, Dog: 93%, Guinea Pig: 92%, Horse: 93%, Human: 100%, Rabbit: 100%, Rat: 93%
Characteristics:	This is a rabbit polyclonal antibody against XRRA1. It was validated on Western Blot using a cell lysate as a positive control.
Purification:	Affinity Purified

Target Details

Target:	XRRA1
Alternative Name:	XRRA1 (XRRA1 Products)

Target Details

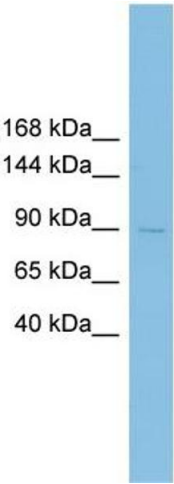
Background:	XRRA1 may be involved in the response of cells to X-ray radiation. Alias Symbols: - Protein Size: 792
Molecular Weight:	90 kDa
Gene ID:	143570
NCBI Accession:	NM_182969 , NP_892014
UniProt:	Q6P2D8

Application Details

Application Notes:	Optimal working dilutions should be determined experimentally by the investigator.
Comment:	Antigen size: 792 AA
Restrictions:	For Research Use only

Handling

Format:	Liquid
Concentration:	Lot specific
Buffer:	Liquid. Purified antibody supplied in 1x PBS buffer with 0.09 % (w/v) sodium azide and 2 % sucrose.
Preservative:	Sodium azide
Precaution of Use:	This product contains Sodium azide: a POISONOUS AND HAZARDOUS SUBSTANCE which should be handled by trained staff only.
Handling Advice:	Avoid repeated freeze-thaw cycles.
Storage:	-20 °C
Storage Comment:	For short term use, store at 2-8°C up to 1 week. For long term storage, store at -20°C in small aliquots to prevent freeze-thaw cycles.



Western Blotting

Image 1. WB Suggested Anti-XRRA1 Antibody Titration:
0.2-1 ug/ml ELISA Titer: 1:1562500 Positive Control:
HepG2 cell lysate