

Datasheet for ABIN2785398  
**anti-PHACTR3 antibody (C-Term)**[Go to Product page](#)

## 1 Image

## Overview

Quantity:	100 µL
Target:	PHACTR3
Binding Specificity:	C-Term
Reactivity:	Human, Mouse, Rat, Rabbit, Dog, Guinea Pig, Cow, Zebrafish (Danio rerio), Horse
Host:	Rabbit
Clonality:	Polyclonal
Conjugate:	This PHACTR3 antibody is un-conjugated
Application:	Western Blotting (WB)

## Product Details

Immunogen:	The immunogen is a synthetic peptide directed towards the C terminal region of human PHACTR3
Sequence:	IEMKLSKRLS QRPVEELER RNILKQRNDQ TEQEERREIK QRLTRKLNQR
Predicted Reactivity:	Cow: 100%, Dog: 100%, Guinea Pig: 100%, Horse: 100%, Human: 100%, Mouse: 100%, Rabbit: 100%, Rat: 100%, Zebrafish: 100%
Characteristics:	This is a rabbit polyclonal antibody against PHACTR3. It was validated on Western Blot using a cell lysate as a positive control.
Purification:	Affinity Purified

## Target Details

Target:	PHACTR3
---------	---------

## Target Details

Alternative Name:	PHACTR3 ( <a href="#">PHACTR3 Products</a> )
Background:	<p>PHACTR3 is associated with the nuclear scaffold in proliferating cells. It was found to bind to the catalytic subunit of protein phosphatase-1 (PP1) and inhibit PP1 activity, suggesting that this protein may function as a regulatory subunit of PP1. The protein encoded by this gene is associated with the nuclear scaffold in proliferating cells. It was found to bind to the catalytic subunit of protein phosphatase-1 (PP1) and inhibit PP1 activity, suggesting that this protein may function as a regulatory subunit of PP1. Alternative splicing at this locus results in several transcript variants encoding different isoforms.</p> <p>Alias Symbols: C20orf101, H17739, MGC117178, SCAPIN1, SCAPININ</p> <p>Protein Interaction Partner: PPP1CA, TAB1, MAPK6, EEF1G,</p> <p>Protein Size: 448</p>
Molecular Weight:	51 kDa
Gene ID:	116154
NCBI Accession:	<a href="#">NM_183246</a> , <a href="#">NP_899069</a>
UniProt:	<a href="#">B1AN69</a>

## Application Details

Application Notes:	Optimal working dilutions should be determined experimentally by the investigator.
Comment:	Antigen size: 448 AA
Restrictions:	For Research Use only

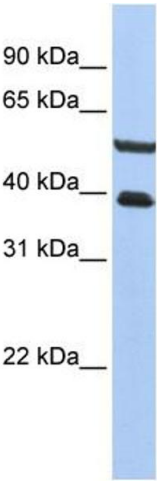
## Handling

Format:	Liquid
Concentration:	Lot specific
Buffer:	Liquid. Purified antibody supplied in 1x PBS buffer with 0.09 % (w/v) sodium azide and 2 % sucrose.
Preservative:	Sodium azide
Precaution of Use:	This product contains Sodium azide: a POISONOUS AND HAZARDOUS SUBSTANCE which should be handled by trained staff only.
Handling Advice:	Avoid repeated freeze-thaw cycles.

Handling

Storage:	-20 °C
Storage Comment:	For short term use, store at 2-8°C up to 1 week. For long term storage, store at -20°C in small aliquots to prevent freeze-thaw cycles.

Images



Western Blotting				
Image	1.	WB	Suggested	Anti-PHACTR3 Antibody
Titration: 0.2-1 ug/ml				
Positive Control: HepG2 cell lysate				