



[Go to Product page](#)

Datasheet for ABIN2785401

anti-FAM36A antibody (C-Term)

2 Images

Overview

Quantity:	100 µL
Target:	FAM36A
Binding Specificity:	C-Term
Reactivity:	Human, Horse, Rabbit, Rat, Mouse
Host:	Rabbit
Clonality:	Polyclonal
Conjugate:	This FAM36A antibody is un-conjugated
Application:	Western Blotting (WB)

Product Details

Immunogen:	The immunogen is a synthetic peptide directed towards the C terminal region of human FAM36A
Sequence:	LGCWFHCRYN YAKQRIQERI AREEIKKKIL YEGTHLDPER KHNGSSSN
Predicted Reactivity:	Horse: 79%, Human: 100%, Mouse: 90%, Rabbit: 79%, Rat: 90%
Characteristics:	This is a rabbit polyclonal antibody against FAM36A. It was validated on Western Blot.
Purification:	Affinity Purified

Target Details

Target:	FAM36A
Alternative Name:	FAM36A (FAM36A Products)

Target Details

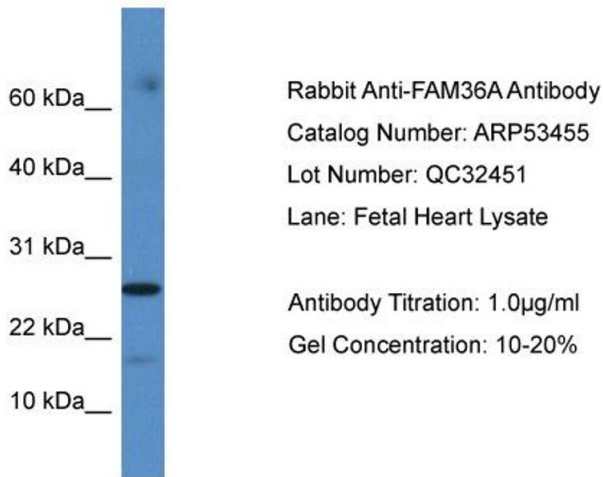
Background:	FAM36A is a multi-pass membrane protein. It belongs to the FAM36 family. The exact function of FAM36A remains unknown. Alias Symbols: FLJ43269, FAM36A Protein Interaction Partner: UBC, Protein Size: 118
Molecular Weight:	13 kDa
Gene ID:	116228
NCBI Accession:	NM_198076 , NP_932342
UniProt:	Q5RI15

Application Details

Application Notes:	Optimal working dilutions should be determined experimentally by the investigator.
Comment:	Antigen size: 118 AA
Restrictions:	For Research Use only

Handling

Format:	Liquid
Concentration:	Lot specific
Buffer:	Liquid. Purified antibody supplied in 1x PBS buffer with 0.09 % (w/v) sodium azide and 2 % sucrose.
Preservative:	Sodium azide
Precaution of Use:	This product contains Sodium azide: a POISONOUS AND HAZARDOUS SUBSTANCE which should be handled by trained staff only.
Handling Advice:	Avoid repeated freeze-thaw cycles.
Storage:	-20 °C
Storage Comment:	For short term use, store at 2-8°C up to 1 week. For long term storage, store at -20°C in small aliquots to prevent freeze-thaw cycles.



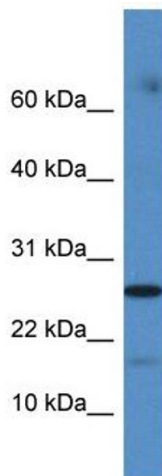
Western Blotting

Image 1. WB Suggested Anti-FAM36A Antibody Titration:

0.2-1 ug/ml

ELISA Titer: 1:62500

Positive Control: Human Muscle



Western Blotting

Image 2.