

[Go to Product page](#)

Datasheet for ABIN2785410

anti-ZPBP2 antibody (N-Term)**2** Images

Overview

| | |
|----------------------|--------------------------------------|
| Quantity: | 100 µL |
| Target: | ZPBP2 |
| Binding Specificity: | N-Term |
| Reactivity: | Human |
| Host: | Rabbit |
| Clonality: | Polyclonal |
| Conjugate: | This ZPBP2 antibody is un-conjugated |
| Application: | Western Blotting (WB) |

Product Details

| | |
|-----------------------|--|
| Immunogen: | The immunogen is a synthetic peptide directed towards the N terminal region of human ZPBP2 |
| Sequence: | MMRTCVLLSA VLWCLTGVQC PRFTLFNKKG FIYGKTGQPD KIYVELHQNS |
| Predicted Reactivity: | Human: 100% |
| Characteristics: | This is a rabbit polyclonal antibody against ZPBP2. It was validated on Western Blot. |
| Purification: | Affinity Purified |

Target Details

| | |
|-------------------|---|
| Target: | ZPBP2 |
| Alternative Name: | ZPBP2 (ZPBP2 Products) |
| Background: | ZPBP2 may be implicated in gamete interaction during fertilization. |

Target Details

Alias Symbols: MGC41930, ZPBPL

Protein Size: 338

Molecular Weight: 39 kDa

Gene ID: 124626

NCBI Accession: [NM_199321](#), [NP_955353](#)

UniProt: [Q6X784](#)

Application Details

Application Notes: Optimal working dilutions should be determined experimentally by the investigator.

Comment: Antigen size: 338 AA

Restrictions: For Research Use only

Handling

Format: Liquid

Concentration: Lot specific

Buffer: Liquid. Purified antibody supplied in 1x PBS buffer with 0.09 % (w/v) sodium azide and 2 % sucrose.

Preservative: Sodium azide

Precaution of Use: This product contains Sodium azide: a POISONOUS AND HAZARDOUS SUBSTANCE which should be handled by trained staff only.

Handling Advice: Avoid repeated freeze-thaw cycles.

Storage: -20 °C

Storage Comment: For short term use, store at 2-8°C up to 1 week. For long term storage, store at -20°C in small aliquots to prevent freeze-thaw cycles.



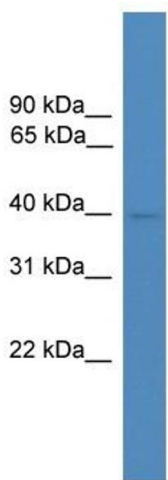
Western Blotting

Image 1. WB Suggested Anti-ZPBP2 Antibody Titration:

0.2-1 ug/ml

ELISA Titer: 1:1562500

Positive Control: OVCAR-3 cell lysate



Rabbit Anti-ZPBP2 Antibody
Catalog Number: ARP53476
Lot Number: QC28196
Lane: OVCAR-3 Cell Lysate

Antibody Titration: 1.0µg/ml
Gel Concentration: 12%

Western Blotting

Image 2. WB Suggested Anti-ZPBP2

Antibody Titration: 0.2-1 µg/mL ELISA Titer: 1:1562500

Positive Control: OVCAR-3 cell lysate