

Datasheet for ABIN2785411  
**anti-ZBPB2 antibody (Middle Region)**[Go to Product page](#)

## 1 Image

## Overview

Quantity:	100 µL
Target:	ZBPB2
Binding Specificity:	Middle Region
Reactivity:	Human, Guinea Pig, Horse, Mouse, Rabbit, Rat
Host:	Rabbit
Clonality:	Polyclonal
Conjugate:	This ZBPB2 antibody is un-conjugated
Application:	Western Blotting (WB)

## Product Details

Immunogen:	The immunogen is a synthetic peptide directed towards the middle region of human ZBPB2
Sequence:	VRLDSCRPGF GKNERLHSNC ASCCVVCSPA TFSPDVNVTC QTCVSVLTYG
Predicted Reactivity:	Guinea Pig: 92%, Horse: 92%, Human: 100%, Mouse: 92%, Rabbit: 92%, Rat: 92%
Characteristics:	This is a rabbit polyclonal antibody against ZBPB2. It was validated on Western Blot using a cell lysate as a positive control.
Purification:	Affinity Purified

## Target Details

Target:	ZBPB2
Alternative Name:	ZBPB2 ( <a href="#">ZBPB2 Products</a> )

## Target Details

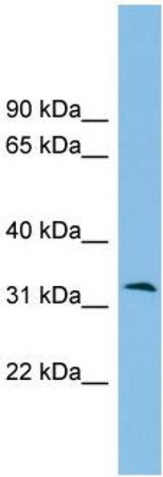
Background:	ZPBP2 may be implicated in gamete interaction during fertilization. Alias Symbols: MGC41930, ZPBPL Protein Size: 315
Molecular Weight:	35 kDa
Gene ID:	124626
NCBI Accession:	<a href="#">NM_198844</a> , <a href="#">NP_942141</a>
UniProt:	<a href="#">Q6X784</a>

## Application Details

Application Notes:	Optimal working dilutions should be determined experimentally by the investigator.
Comment:	Antigen size: 315 AA
Restrictions:	For Research Use only

## Handling

Format:	Liquid
Concentration:	Lot specific
Buffer:	Liquid. Purified antibody supplied in 1x PBS buffer with 0.09 % (w/v) sodium azide and 2 % sucrose.
Preservative:	Sodium azide
Precaution of Use:	This product contains Sodium azide: a POISONOUS AND HAZARDOUS SUBSTANCE which should be handled by trained staff only.
Handling Advice:	Avoid repeated freeze-thaw cycles.
Storage:	-20 °C
Storage Comment:	For short term use, store at 2-8°C up to 1 week. For long term storage, store at -20°C in small aliquots to prevent freeze-thaw cycles.



Western Blotting

**Image 1.** WB Suggested Anti-ZPBP2 Antibody Titration:  
0.2-1 ug/ml ELISA Titer: 1:312500 Positive Control: Hela  
cell lysate