

Datasheet for ABIN2785424
anti-OSCP1 antibody (N-Term)[Go to Product page](#)

1 Image

Overview

Quantity:	100 µL
Target:	OSCP1
Binding Specificity:	N-Term
Reactivity:	Human, Rat, Mouse, Rabbit, Guinea Pig, Cow, Horse, Zebrafish (Danio rerio)
Host:	Rabbit
Clonality:	Polyclonal
Conjugate:	This OSCP1 antibody is un-conjugated
Application:	Western Blotting (WB)

Product Details

Immunogen:	The immunogen is a synthetic peptide directed towards the N terminal region of human C1orf102
Sequence:	MSVRTLPLLF LNLGGEMLYI LDQRLRAQNI PGDKARKDEW TEVDRKRVLN
Predicted Reactivity:	Cow: 100%, Guinea Pig: 100%, Horse: 93%, Human: 100%, Mouse: 100%, Rabbit: 100%, Rat: 100%, Zebrafish: 93%
Characteristics:	This is a rabbit polyclonal antibody against C1orf102. It was validated on Western Blot using a cell lysate as a positive control.
Purification:	Affinity Purified

Target Details

Target:	OSCP1
---------	-------

Target Details

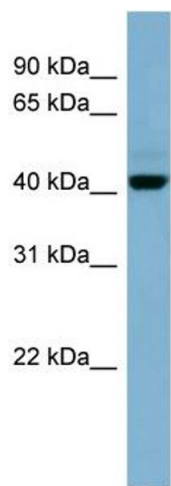
Alternative Name:	C1orf102 (OSCP1 Products)
Background:	The function of this protein remains unknown. Alias Symbols: MGC26685, NOR1, OSCP1, C1orf102 Protein Size: 389
Molecular Weight:	43 kDa
Gene ID:	127700
NCBI Accession:	NM_145047 , NP_659484
UniProt:	Q8WVF1

Application Details

Application Notes:	Optimal working dilutions should be determined experimentally by the investigator.
Comment:	Antigen size: 389 AA
Restrictions:	For Research Use only

Handling

Format:	Liquid
Concentration:	Lot specific
Buffer:	Liquid. Purified antibody supplied in 1x PBS buffer with 0.09 % (w/v) sodium azide and 2 % sucrose.
Preservative:	Sodium azide
Precaution of Use:	This product contains Sodium azide: a POISONOUS AND HAZARDOUS SUBSTANCE which should be handled by trained staff only.
Handling Advice:	Avoid repeated freeze-thaw cycles.
Storage:	-20 °C
Storage Comment:	For short term use, store at 2-8°C up to 1 week. For long term storage, store at -20°C in small aliquots to prevent freeze-thaw cycles.



Western Blotting				
Image	1.	WB	Suggested	Anti-C1orf102 Antibody
Titration: 0.2-1 ug/ml				
ELISA Titer: 1:312500				
Positive Control: NCI-H226 cell lysate				