

Datasheet for ABIN2785427  
**anti-ERICH1 antibody (Middle Region)**



[Go to Product page](#)

1 Image

## Overview

Quantity:	100 µL
Target:	ERICH1
Binding Specificity:	Middle Region
Reactivity:	Human
Host:	Rabbit
Clonality:	Polyclonal
Conjugate:	This ERICH1 antibody is un-conjugated
Application:	Western Blotting (WB)

## Product Details

Immunogen:	The immunogen is a synthetic peptide directed towards the middle region of human ERICH1
Sequence:	SEEDPTPAGE EDVKDAREED GVDTIEEDLT RAGEEDGKDT REEDGADASE
Predicted Reactivity:	Human: 100%
Characteristics:	This is a rabbit polyclonal antibody against ERICH1. It was validated on Western Blot.
Purification:	Affinity Purified

## Target Details

Target:	ERICH1
Alternative Name:	ERICH1 ( <a href="#">ERICH1 Products</a> )
Background:	Alias Symbols: HSPC319

## Target Details

---

Protein Size: 345

Molecular Weight: 37 kDa

Gene ID: 157697

NCBI Accession: [NM\\_207332, NP\\_997215](#)

UniProt: [Q86X53](#)

## Application Details

---

Restrictions: For Research Use only

## Handling

---

Format: Liquid

Concentration: 1 mg/mL

Buffer: Liquid. Purified antibody supplied in 1x PBS buffer with 0.09 % (w/v) sodium azide and 2 % sucrose.

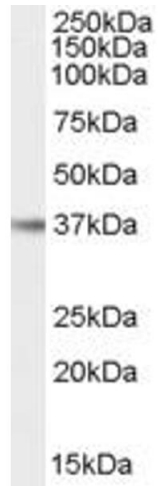
Preservative: Sodium azide

Precaution of Use: This product contains Sodium azide: a POISONOUS AND HAZARDOUS SUBSTANCE which should be handled by trained staff only.

Handling Advice: Avoid repeat freeze-thaw cycles.

Storage: -20 °C

Storage Comment: For short term use, store at 2-8°C up to 1 week. For long term storage, store at -20°C in small aliquots to prevent freeze-thaw cycles.



### Western Blotting

Image 1.