

Datasheet for ABIN2785432
anti-CST6 antibody (Middle Region)[2 Images](#)[2 Publications](#)[Go to Product page](#)

Overview

Quantity:	100 µL
Target:	CST6
Binding Specificity:	Middle Region
Reactivity:	Human, Rat, Mouse, Cow, Guinea Pig, Rabbit
Host:	Rabbit
Clonality:	Polyclonal
Conjugate:	This CST6 antibody is un-conjugated
Application:	Western Blotting (WB)

Product Details

Immunogen:	The immunogen is a synthetic peptide directed towards the middle region of human Cst6
Sequence:	CGELIPPPPP SYRLSLTLTS PLSTAAKELV LIPLHAAPNQ AVAEIDALYD
Predicted Reactivity:	Cow: 79%, Guinea Pig: 86%, Human: 100%, Mouse: 79%, Rabbit: 86%, Rat: 93%
Characteristics:	This is a rabbit polyclonal antibody against Cst6. It was validated on Western Blot.
Purification:	Affinity Purified

Target Details

Target:	CST6
Alternative Name:	Cst6 (CST6 Products)
Background:	The function of Cst6 remains unknown.

Target Details

	Alias Symbols: 1110017E11Rik, N28197, ichq Protein Size: 149
Molecular Weight:	16 kDa
Gene ID:	73720
NCBI Accession:	NM_028623 , NP_082899
UniProt:	Q9D1B1

Application Details

Application Notes:	Optimal working dilutions should be determined experimentally by the investigator.
Comment:	Antigen size: 149 AA
Restrictions:	For Research Use only

Handling

Format:	Liquid
Concentration:	Lot specific
Buffer:	Liquid. Purified antibody supplied in 1x PBS buffer with 0.09 % (w/v) sodium azide and 2 % sucrose.
Preservative:	Sodium azide
Precaution of Use:	This product contains Sodium azide: a POISONOUS AND HAZARDOUS SUBSTANCE which should be handled by trained staff only.
Handling Advice:	Avoid repeated freeze-thaw cycles.
Storage:	-20 °C
Storage Comment:	For short term use, store at 2-8°C up to 1 week. For long term storage, store at -20°C in small aliquots to prevent freeze-thaw cycles.

Publications

Product cited in:	Ueda, Nagae, Kozawa, Morishita, Kimura, Nagase, Ohara, Yoshida, Asano: "Heterotrimeric G protein betagamma subunits stimulate FLJ00018, a guanine nucleotide exchange factor for Rac1 and Cdc42." in: The Journal of biological chemistry , Vol. 283, Issue 4, pp. 1946-53, (2008) (PubMed).
-------------------	---

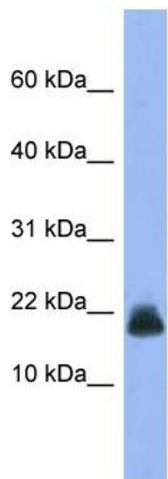


Western Blotting

Image 1. WB Suggested Anti-Cst6 Antibody Titration: 0.2-1 μ g/ml

ELISA Titer: 1:312500

Positive Control: Mouse Spleen



Rabbit Anti-Cst6 Antibody
Catalog Number: ARP53533
Lot Number: QC24247
Lane: Mouse Spleen Lysate

Antibody Titration: 1.0 μ g/ml
Gel Concentration: 10-20%

Western Blotting

Image 2. WB Suggested Anti-Cst6
Antibody Titration: 0.2-1 μ g/mL ELISA Titer: 1:12500
Positive Control: Mouse Spleen