

Datasheet for ABIN2785436

**anti-Neurexophilin 4 antibody (N-Term)**[Go to Product page](#)**1** Image

## Overview

Quantity:	100 µL
Target:	Neurexophilin 4 (NXPH4)
Binding Specificity:	N-Term
Reactivity:	Human, Rat, Mouse, Cow, Dog, Horse, Pig
Host:	Rabbit
Clonality:	Polyclonal
Conjugate:	This Neurexophilin 4 antibody is un-conjugated
Application:	Western Blotting (WB)

## Product Details

Immunogen:	The immunogen is a synthetic peptide directed towards the N terminal region of human NXPH4
Sequence:	MRLLPEWFLL LFGPWLLRKA VSAQIPESGR PQYLGLRPAA AGAGAPGQQL
Predicted Reactivity:	Cow: 86%, Dog: 86%, Horse: 93%, Human: 100%, Mouse: 92%, Pig: 86%, Rat: 92%
Characteristics:	This is a rabbit polyclonal antibody against NXPH4. It was validated on Western Blot using a cell lysate as a positive control.
Purification:	Affinity Purified

## Target Details

Target:	Neurexophilin 4 (NXPH4)
Alternative Name:	NXPH4 ( <a href="#">NXPH4 Products</a> )

## Target Details

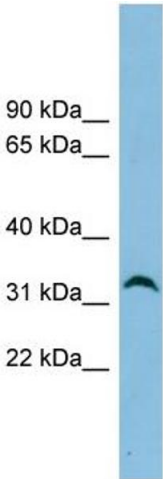
Background:	NXPH4 may be signaling molecules that resemble neuropeptides and that act by binding to alpha-neurexins and possibly other receptors. Alias Symbols: NPH4 Protein Size: 308
Molecular Weight:	34 kDa
Gene ID:	11247
NCBI Accession:	<a href="#">NM_007224</a> , <a href="#">NP_009155</a>
UniProt:	<a href="#">O95158</a>

## Application Details

Application Notes:	Optimal working dilutions should be determined experimentally by the investigator.
Comment:	Antigen size: 308 AA
Restrictions:	For Research Use only

## Handling

Format:	Liquid
Concentration:	Lot specific
Buffer:	Liquid. Purified antibody supplied in 1x PBS buffer with 0.09 % (w/v) sodium azide and 2 % sucrose.
Preservative:	Sodium azide
Precaution of Use:	This product contains Sodium azide: a POISONOUS AND HAZARDOUS SUBSTANCE which should be handled by trained staff only.
Handling Advice:	Avoid repeated freeze-thaw cycles.
Storage:	-20 °C
Storage Comment:	For short term use, store at 2-8°C up to 1 week. For long term storage, store at -20°C in small aliquots to prevent freeze-thaw cycles.



**Western Blotting**

**Image 1.** WB Suggested Anti-NXPH4 Antibody Titration: 0.2-1 ug/ml ELISA Titer: 1:1562500 Positive Control: HepG2 cell lysate