

Datasheet for ABIN2785437
anti-SPATA24 antibody (C-Term)[Go to Product page](#)

1 Image

Overview

Quantity:	100 µL
Target:	SPATA24
Binding Specificity:	C-Term
Reactivity:	Human, Rabbit, Dog, Guinea Pig, Horse, Pig, Rat
Host:	Rabbit
Clonality:	Polyclonal
Conjugate:	This SPATA24 antibody is un-conjugated
Application:	Western Blotting (WB)

Product Details

Immunogen:	The immunogen is a synthetic peptide directed towards the c terminal region of human SPATA24
Sequence:	LQQVISQQKQ IFRNHMSDFR IQKQQESYMA QVLDQKHKKA SGTRQARSHQ
Predicted Reactivity:	Dog: 93%, Guinea Pig: 79%, Horse: 93%, Human: 100%, Pig: 93%, Rabbit: 100%, Rat: 86%
Characteristics:	This is a rabbit polyclonal antibody against SPATA24 . It was validated on Western Blot using a cell lysate as a positive control.
Purification:	Affinity Purified

Target Details

Target:	SPATA24
---------	---------

Target Details

Alternative Name:	SPATA24 (SPATA24 Products)
Background:	<p>SPATA24 binds DNA with high affinity but does not bind to TATA boxes.SPATA24 synergises with GMNN and TBP in activation of TATA box-containing promoters and with GMNN and TBPL1 in activation of the NF1 TATA-less promoter.SPATA24 may play a role in cytoplasm movement and removal during spermiogenesis.</p> <p>Alias Symbols: T6441, CCDC161, SPATA24</p> <p>Protein Interaction Partner: KRT40, KRTAP4-2, LZTS2, CEP72, MID2, CALCOCO2, KRT31, KDM1A, SUV39H1, EHD2, IQCB1, PTAFR, FLOT2, CAMK2D,</p> <p>Protein Size: 205</p>
Molecular Weight:	23 kDa
Gene ID:	202051
NCBI Accession:	NM_194296 , NP_919272
UniProt:	Q86W54

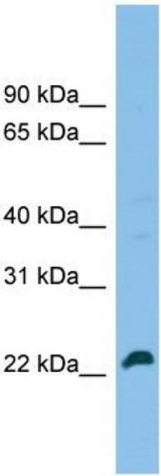
Application Details

Application Notes:	Optimal working dilutions should be determined experimentally by the investigator.
Comment:	Antigen size: 205 AA
Restrictions:	For Research Use only

Handling

Format:	Liquid
Concentration:	Lot specific
Buffer:	Liquid. Purified antibody supplied in 1x PBS buffer with 0.09 % (w/v) sodium azide and 2 % sucrose.
Preservative:	Sodium azide
Precaution of Use:	This product contains Sodium azide: a POISONOUS AND HAZARDOUS SUBSTANCE which should be handled by trained staff only.
Handling Advice:	Avoid repeated freeze-thaw cycles.
Storage:	-20 °C
Storage Comment:	For short term use, store at 2-8°C up to 1 week. For long term storage, store at -20°C in small

aliquots to prevent freeze-thaw cycles.



Western Blotting

Image 1. WB Suggested Anti-SPATA24 Antibody Titration:
0.2-1 ug/ml ELISA Titer: 1:312500 Positive Control: Jurkat
cell lysate