

Datasheet for ABIN2785438
anti-PLA2G4E antibody (C-Term)[Go to Product page](#)

1 Image

Overview

Quantity:	100 µL
Target:	PLA2G4E
Binding Specificity:	C-Term
Reactivity:	Human, Rat, Mouse, Cow, Dog, Guinea Pig, Rabbit, Horse
Host:	Rabbit
Clonality:	Polyclonal
Conjugate:	This PLA2G4E antibody is un-conjugated
Application:	Western Blotting (WB)

Product Details

Immunogen:	The immunogen is a synthetic peptide directed towards the c terminal region of human PLA2G4E
Sequence:	TFFPLINDTF RKYKAPGVER SPEELEQGQV DIYGPKTPYA TKELTYTEAT
Predicted Reactivity:	Cow: 100%, Dog: 100%, Guinea Pig: 87%, Horse: 92%, Human: 100%, Mouse: 92%, Rabbit: 100%, Rat: 100%
Characteristics:	This is a rabbit polyclonal antibody against PLA2G4E. It was validated on Western Blot using a cell lysate as a positive control.
Purification:	Affinity Purified

Target Details

Target:	PLA2G4E
---------	---------

Target Details

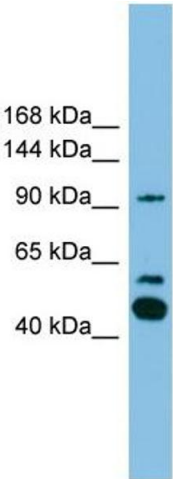
Alternative Name:	PLA2G4E (PLA2G4E Products)
Background:	The function of this protein remains unknown. Alias Symbols: FLJ45651, MGC126633, MGC126661 Protein Size: 839
Molecular Weight:	96 kDa
Gene ID:	123745
NCBI Accession:	NM_001080490 , NP_001073959
UniProt:	C9JK77
Pathways:	Inositol Metabolic Process , VEGF Signaling

Application Details

Application Notes:	Optimal working dilutions should be determined experimentally by the investigator.
Comment:	Antigen size: 839 AA
Restrictions:	For Research Use only

Handling

Format:	Liquid
Concentration:	Lot specific
Buffer:	Liquid. Purified antibody supplied in 1x PBS buffer with 0.09 % (w/v) sodium azide and 2 % sucrose.
Preservative:	Sodium azide
Precaution of Use:	This product contains Sodium azide: a POISONOUS AND HAZARDOUS SUBSTANCE which should be handled by trained staff only.
Handling Advice:	Avoid repeated freeze-thaw cycles.
Storage:	-20 °C
Storage Comment:	For short term use, store at 2-8°C up to 1 week. For long term storage, store at -20°C in small aliquots to prevent freeze-thaw cycles.



Western Blotting

Image 1. WB Suggested Anti-PLA2G4E Antibody Titration:
0.2-1 ug/ml ELISA Titer: 1:1562500 Positive Control:
HepG2 cell lysate