



[Go to Product page](#)

Datasheet for ABIN2785454

anti-AP2B1 antibody (Middle Region)

1 Image

1 Publication

Overview

Quantity:	100 µL
Target:	AP2B1
Binding Specificity:	Middle Region
Reactivity:	Human, Mouse, Rat, Cow, Dog, Guinea Pig, Horse, Rabbit, Zebrafish (Danio rerio)
Host:	Rabbit
Clonality:	Polyclonal
Conjugate:	This AP2B1 antibody is un-conjugated
Application:	Western Blotting (WB)

Product Details

Immunogen:	The immunogen is a synthetic peptide directed towards the middle region of human AP2B1
Sequence:	SETQELVQQV LSLATQSDN PDLRDRGYIY WRLLSTDPVT AKEVVLSEKP
Predicted Reactivity:	Cow: 100%, Dog: 100%, Guinea Pig: 100%, Horse: 100%, Human: 100%, Mouse: 100%, Rabbit: 100%, Rat: 100%, Zebrafish: 100%
Characteristics:	This is a rabbit polyclonal antibody against AP2B1. It was validated on Western Blot using a cell lysate as a positive control.
Purification:	Affinity Purified

Target Details

Target:	AP2B1
---------	-------

Target Details

Alternative Name: [AP2B1 \(AP2B1 Products\)](#)

Background: AP2B1 is one of two large chain components of the assembly protein complex 2, which serves to link clathrin to receptors in coated vesicles. AP2B1 is found on the cytoplasmic face of coated vesicles in the plasma membrane. The protein encoded by this gene is one of two large chain components of the assembly protein complex 2, which serves to link clathrin to receptors in coated vesicles. The encoded protein is found on the cytoplasmic face of coated vesicles in the plasma membrane. Two transcript variants encoding different isoforms have been found for this gene.

Alias Symbols: ADTB2, AP105B, AP2-BETA, CLAPB1, DKFZp781K0743

Protein Interaction Partner: NEU4, XRCC6BP1, THAP1, U2AF1, KPNA2, SLC25A6, AFF4, TXN2, PIP5K1C, RAPGEF3, AP1M2, SUMO2, GTF2I, UBC, EGFR, SUMO1, NEDD8, EPHA2, RPA3, RPA2, RPA1, SEC24C, NUSAP1, EPN1, XPO7, PLOD2, LNPEP, GRB2, LDLRAP1, AP2M1, UBD, RNF11, MMS19, ITGA4, FN1, ERBB2, DAB2,

Protein Size: 951

Molecular Weight: 105 kDa

Gene ID: 163

NCBI Accession: [NM_001030006](#), [NP_001025177](#)

UniProt: [P63010](#)

Pathways: [EGFR Signaling Pathway](#), [Neurotrophin Signaling Pathway](#), [EGFR Downregulation](#)

Application Details

Application Notes: Optimal working dilutions should be determined experimentally by the investigator.

Comment: Antigen size: 951 AA

Restrictions: For Research Use only

Handling

Format: Liquid

Concentration: Lot specific

Buffer: Liquid. Purified antibody supplied in 1x PBS buffer with 0.09 % (w/v) sodium azide and 2 % sucrose.

Preservative: Sodium azide

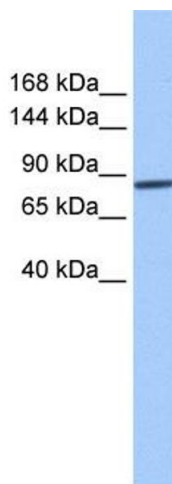
Handling

Precaution of Use:	This product contains Sodium azide: a POISONOUS AND HAZARDOUS SUBSTANCE which should be handled by trained staff only.
Handling Advice:	Avoid repeated freeze-thaw cycles.
Storage:	-20 °C
Storage Comment:	For short term use, store at 2-8°C up to 1 week. For long term storage, store at -20°C in small aliquots to prevent freeze-thaw cycles.

Publications

Product cited in:	Hoffmann, Dietrich, Herrmann, Schacht, Albrecht, Methner: "Dimethyl Fumarate Induces Glutathione Recycling by Upregulation of Glutathione Reductase." in: Oxidative medicine and cellular longevity , Vol. 2017, pp. 6093903, (2017) (PubMed).
-------------------	---

Images



Western Blotting

Image 1. WB Suggested Anti-AP2B1 Antibody Titration:

0.2-1 ug/ml

Positive Control: Human Liver