

Datasheet for ABIN2785457
anti-CRISP1 antibody (N-Term)



[Go to Product page](#)

1 Image

Overview

Quantity:	100 µL
Target:	CRISP1
Binding Specificity:	N-Term
Reactivity:	Human, Rabbit, Zebrafish (Danio rerio), Cow, Goat, Pig, Dog
Host:	Rabbit
Clonality:	Polyclonal
Conjugate:	This CRISP1 antibody is un-conjugated
Application:	Western Blotting (WB)

Product Details

Immunogen:	The immunogen is a synthetic peptide directed towards the N terminal region of human CRISP1
Sequence:	LKMSWSEEEA QNARIFSKYC DMTESNPLER RLPNTFCGEN MHMTSYPVSW
Predicted Reactivity:	Cow: 85%, Dog: 85%, Goat: 85%, Human: 100%, Pig: 85%, Rabbit: 79%, Zebrafish: 100%
Characteristics:	This is a rabbit polyclonal antibody against CRISP1. It was validated on Western Blot using a cell lysate as a positive control.
Purification:	Affinity Purified

Target Details

Target:	CRISP1
---------	--------

Target Details

Alternative Name:	CRISP1 (CRISP1 Products)
Background:	<p>Fertilization consists of a sequence of specific cell-cell interactions culminating in the fusion of the sperm and egg plasma membranes. Recognition, binding, and fusion occur through the interaction of complementary molecules that are localized to specific domains of the sperm and egg plasma membranes. In the sperm, the postacrosomal region or equatorial segment is involved in sperm-egg plasma membrane fusion. CRISP1 is a member of the cysteine-rich secretory protein (CRISP) family. It is expressed in the epididymis, is secreted into the epididymal lumen, and binds to the postacrosomal region of the sperm head where it plays a role at fertilization in sperm-egg fusion through complementary sites localized on the egg surface.</p> <p>Fertilization consists of a sequence of specific cell-cell interactions culminating in the fusion of the sperm and egg plasma membranes. Recognition, binding, and fusion occur through the interaction of complementary molecules that are localized to specific domains of the sperm and egg plasma membranes. In the sperm, the postacrosomal region or equatorial segment is involved in sperm-egg plasma membrane fusion. The protein encoded by this gene is a member of the cysteine-rich secretory protein (CRISP) family. This protein is expressed in the epididymis, is secreted into the epididymal lumen, and binds to the postacrosomal region of the sperm head where it plays a role at fertilization in sperm-egg fusion through complementary sites localized on the egg surface. Two isoforms are encoded by transcript variants of this gene.</p> <p>Alias Symbols: AEGL1, ARP, CRISP-1, HSCRISP1D, HSCRISP1G, HUMARP</p> <p>Protein Size: 249</p>
Molecular Weight:	27 kDa
Gene ID:	167
NCBI Accession:	NM_001131 , NP_001122
UniProt:	P54107

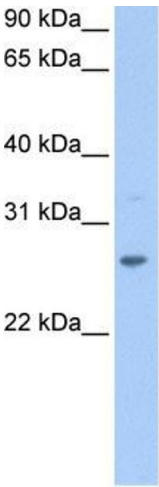
Application Details

Application Notes:	Optimal working dilutions should be determined experimentally by the investigator.
Comment:	Antigen size: 249 AA
Restrictions:	For Research Use only

Handling

Format:	Liquid
Concentration:	Lot specific
Buffer:	Liquid. Purified antibody supplied in 1x PBS buffer with 0.09 % (w/v) sodium azide and 2 % sucrose.
Preservative:	Sodium azide
Precaution of Use:	This product contains Sodium azide: a POISONOUS AND HAZARDOUS SUBSTANCE which should be handled by trained staff only.
Handling Advice:	Avoid repeated freeze-thaw cycles.
Storage:	-20 °C
Storage Comment:	For short term use, store at 2-8°C up to 1 week. For long term storage, store at -20°C in small aliquots to prevent freeze-thaw cycles.

Images



Western Blotting

Image 1. WB Suggested Anti-CRISP1 Antibody Titration:

0.2-1 ug/ml

Positive Control: 721_B cell lysate