

Datasheet for ABIN2785458  
**anti-CRISP1 antibody (N-Term)**



[Go to Product page](#)

1 Image

### Overview

Quantity:	100 µL
Target:	CRISP1
Binding Specificity:	N-Term
Reactivity:	Human, Mouse, Rat
Host:	Rabbit
Clonality:	Polyclonal
Conjugate:	This CRISP1 antibody is un-conjugated
Application:	Western Blotting (WB)

### Product Details

Sequence:	ARIFSKYCDM TESNPLERRL PNTFCGENMH MTSYPVSWSS VIGVWYSEST
Predicted Reactivity:	Human: 100%, Mouse: 77%, Rat: 77%
Characteristics:	This is a rabbit polyclonal antibody against CRISP1. It was validated on Western Blot.
Purification:	Affinity Purified

### Target Details

Target:	CRISP1
Alternative Name:	CRISP1 ( <a href="#">CRISP1 Products</a> )
Background:	Fertilization consists of a sequence of specific cell-cell interactions culminating in the fusion of the sperm and egg plasma membranes. Recognition, binding, and fusion occur through the

## Target Details

---

interaction of complementary molecules that are localized to specific domains of the sperm and egg plasma membranes. In the sperm, the postacrosomal region or equatorial segment is involved in sperm-egg plasma membrane fusion. CRISP1 is a member of the cysteine-rich secretory protein (CRISP) family. It is expressed in the epididymis, is secreted into the epididymal lumen, and binds to the postacrosomal region of the sperm head where it plays a role at fertilization in sperm-egg fusion through complementary sites localized on the egg surface.

Alias Symbols: AEGL1, ARP, CRISP-1, HSCRISP1D, HSCRISP1G, HUMARP

Protein Size: 249

---

Molecular Weight: 27 kDa

---

Gene ID: 167

---

NCBI Accession: [NM\\_001131](#), [NP\\_001122](#)

---

UniProt: [P54107](#)

## Application Details

---

Application Notes: Optimal working dilutions should be determined experimentally by the investigator.

---

Comment: Antigen size: 249 AA

---

Restrictions: For Research Use only

## Handling

---

Format: Liquid

---

Concentration: Lot specific

---

Buffer: Liquid. Purified antibody supplied in 1x PBS buffer with 0.09 % (w/v) sodium azide and 2 % sucrose.

---

Preservative: Sodium azide

---

Precaution of Use: This product contains Sodium azide: a POISONOUS AND HAZARDOUS SUBSTANCE which should be handled by trained staff only.

---

Handling Advice: Avoid repeated freeze-thaw cycles.

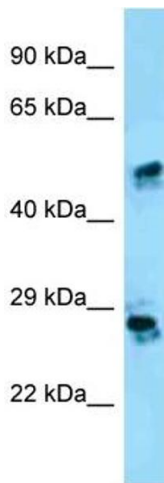
---

Storage: -20 °C

---

Storage Comment: For short term use, store at 2-8°C up to 1 week. For long term storage, store at -20°C in small

aliquots to prevent freeze-thaw cycles.



#### Western Blotting

**Image 1.** WB Suggested Anti-CRISP1 Antibody Titration: 1.0 ug/ml Positive Control: HepG2 Whole Cell CRISP1 is strongly supported by BioGPS gene expression data to be expressed in Human HepG2 cells