

Datasheet for ABIN2785460  
**anti-CPD antibody (N-Term)**[Go to Product page](#)

## 1 Image

## Overview

Quantity:	100 µL
Target:	CPD
Binding Specificity:	N-Term
Reactivity:	Human, Rat, Mouse, Dog, Pig, Horse, Rabbit
Host:	Rabbit
Clonality:	Polyclonal
Conjugate:	This CPD antibody is un-conjugated
Application:	Western Blotting (WB), Immunohistochemistry (IHC)

## Product Details

Immunogen:	The immunogen is a synthetic peptide directed towards the N terminal region of human CPD
Sequence:	SLNPDGFERA REGDCGFGDG GPSGASGRDN SRGRDLNRSF PDQFSTGEPP
Predicted Reactivity:	Dog: 86%, Horse: 93%, Human: 100%, Mouse: 79%, Pig: 86%, Rabbit: 93%, Rat: 79%
Characteristics:	This is a rabbit polyclonal antibody against CPD. It was validated on Western Blot using a cell lysate as a positive control.
Purification:	Affinity Purified

## Target Details

Target:	CPD
Alternative Name:	CPD ( <a href="#">CPD Products</a> )

## Target Details

Background:	<p>The metallocarboxypeptidase family of enzymes is divided into 2 subfamilies based on sequence similarities. The pancreatic carboxypeptidase-like and the regulatory B-type carboxypeptidase subfamilies. Carboxypeptidase D (CPD) has been identified as a regulatory B-type carboxypeptidase. CPD is a homolog of duck gp180, a hepatitis B virus-binding protein.</p> <p>The metallocarboxypeptidase family of enzymes is divided into 2 subfamilies based on sequence similarities. The pancreatic carboxypeptidase-like and the regulatory B-type carboxypeptidase subfamilies. Carboxypeptidase D has been identified as a regulatory B-type carboxypeptidase. CPD is a homolog of duck gp180, a hepatitis B virus-binding protein.</p> <p>Transcript variants utilizing alternative polyadenylation signals exist for this gene. Publication Note: This RefSeq record includes a subset of the publications that are available for this gene. Please see the Entrez Gene record to access additional publications.</p> <p>Alias Symbols: GP180</p> <p>Protein Interaction Partner: UBC, LGR4, ASB17, FBXO6, ATP4A, AATF, UBL4A, RAD18, KIAA0368, TCF3, ELAVL1,</p> <p>Protein Size: 1380</p>
Molecular Weight:	152 kDa
Gene ID:	1362
NCBI Accession:	<a href="#">NM_001304</a> , <a href="#">NP_001295</a>
UniProt:	<a href="#">O75976</a>
Pathways:	<a href="#">Synaptic Membrane</a> , <a href="#">Regulation of G-Protein Coupled Receptor Protein Signaling</a>

## Application Details

Application Notes:	Optimal working dilutions should be determined experimentally by the investigator.
Comment:	Antigen size: 1380 AA
Restrictions:	For Research Use only

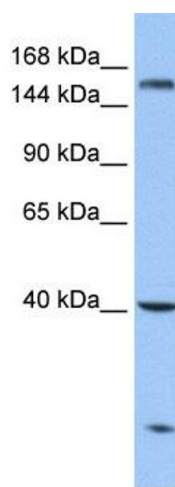
## Handling

Format:	Liquid
Concentration:	Lot specific
Buffer:	Liquid. Purified antibody supplied in 1x PBS buffer with 0.09 % (w/v) sodium azide and 2 % sucrose.

## Handling

Preservative:	Sodium azide
Precaution of Use:	This product contains Sodium azide: a POISONOUS AND HAZARDOUS SUBSTANCE which should be handled by trained staff only.
Handling Advice:	Avoid repeated freeze-thaw cycles.
Storage:	-20 °C
Storage Comment:	For short term use, store at 2-8°C up to 1 week. For long term storage, store at -20°C in small aliquots to prevent freeze-thaw cycles.

## Images



**Western Blotting**

**Image 1. WB Suggested Anti-CPD Antibody Titration:** 0.2-1 ug/ml

**Positive Control:** Hela cell lysate