

Datasheet for ABIN2785461
anti-CYLC2 antibody (C-Term)[Go to Product page](#)

1 Image

Overview

Quantity:	100 µL
Target:	CYLC2
Binding Specificity:	C-Term
Reactivity:	Human, Cow, Rat, Horse, Dog, Guinea Pig, Pig, Rabbit, Saccharomyces cerevisiae, Zebrafish (Danio rerio)
Host:	Rabbit
Clonality:	Polyclonal
Conjugate:	This CYLC2 antibody is un-conjugated
Application:	Western Blotting (WB)

Product Details

Immunogen:	The immunogen is a synthetic peptide directed towards the C terminal region of human CYLC2
Sequence:	DAKKVAKKDT EKESADSKKD AKKNAKKDAK KDAKKNAKKD EKKDAKKKGK
Predicted Reactivity:	Cow: 86%, Dog: 79%, Guinea Pig: 79%, Horse: 77%, Human: 100%, Pig: 86%, Rabbit: 80%, Rat: 79%, Yeast: 79%, Zebrafish: 77%
Characteristics:	This is a rabbit polyclonal antibody against CYLC2. It was validated on Western Blot using a cell lysate as a positive control.
Purification:	Affinity Purified

Target Details

Target:	CYLC2
---------	-------

Target Details

Alternative Name:	CYLC2 (CYLC2 Products)
Background:	<p>Cylicin II (CYCL2) is specifically expressed in testis and is part of the cytoskeletal calyx of mammalian sperm heads. Cylicin II may play a role in the morphogenesis of the sperm head.</p> <p>Cylicin II (CYCL2) is specifically expressed in testis and is part of the cytoskeletal calyx of mammalian sperm heads. Cylicin II may play a role in the morphogenesis of the sperm head.</p> <p>PRIMARYREFSEQ_SPAN PRIMARY_IDENTIFIER PRIMARY_SPAN COMP 1-1440 Z46788.1 1-1440 1441-1622 AL449304.19 15467-15648 1623-2119 Z46788.1 1620-2116</p> <p>Alias Symbols: MGC129591</p> <p>Protein Interaction Partner: POT1, TERF2,</p> <p>Protein Size: 348</p>
Molecular Weight:	38 kDa
Gene ID:	1539
NCBI Accession:	NM_001340 , NP_001331
UniProt:	Q14093

Application Details

Application Notes:	Optimal working dilutions should be determined experimentally by the investigator.
Comment:	Antigen size: 348 AA
Restrictions:	For Research Use only

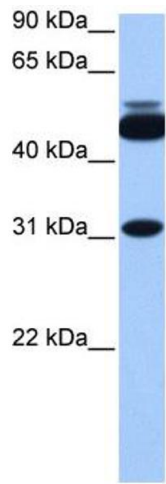
Handling

Format:	Liquid
Concentration:	Lot specific
Buffer:	Liquid. Purified antibody supplied in 1x PBS buffer with 0.09 % (w/v) sodium azide and 2 % sucrose.
Preservative:	Sodium azide
Precaution of Use:	This product contains Sodium azide: a POISONOUS AND HAZARDOUS SUBSTANCE which should be handled by trained staff only.
Handling Advice:	Avoid repeated freeze-thaw cycles.
Storage:	-20 °C

Handling

Storage Comment: For short term use, store at 2-8°C up to 1 week. For long term storage, store at -20°C in small aliquots to prevent freeze-thaw cycles.

Images



Western Blotting

Image 1. WB Suggested Anti-CYLC2 Antibody Titration:
0.2-1 ug/ml

Positive Control: 721_B cell lysate