

Datasheet for ABIN2785471

anti-Lactate Dehydrogenase C antibody (Middle Region)



[Go to Product page](#)

1 Image

Overview

Quantity:	100 µL
Target:	Lactate Dehydrogenase C (LDHC)
Binding Specificity:	Middle Region
Reactivity:	Human, Mouse, Rat, Dog, Horse, Rabbit, Cow, Goat, Guinea Pig, Pig, Zebrafish (Danio rerio)
Host:	Rabbit
Clonality:	Polyclonal
Conjugate:	This Lactate Dehydrogenase C antibody is un-conjugated
Application:	Western Blotting (WB)

Product Details

Immunogen:	The immunogen is a synthetic peptide directed towards the middle region of human LDHC
Sequence:	IVIVTAGARQ QEGETRLALV QRNVAIMKSI IPAIVHYSPD CKILVVSNPV
Predicted Reactivity:	Cow: 93%, Dog: 100%, Goat: 92%, Guinea Pig: 92%, Horse: 100%, Human: 100%, Mouse: 100%, Pig: 93%, Rabbit: 100%, Rat: 100%, Zebrafish: 93%
Characteristics:	This is a rabbit polyclonal antibody against LDHC. It was validated on Western Blot using a cell lysate as a positive control.
Purification:	Affinity Purified

Target Details

Target:	Lactate Dehydrogenase C (LDHC)
---------	--------------------------------

Target Details

Alternative Name:	LDHC (LDHC Products)
Background:	<p>Lactate dehydrogenase C catalyzes the conversion of L-lactate and NAD to pyruvate and NADH in the final step of anaerobic glycolysis. LDHC is testis-specific and belongs to the lactate dehydrogenase family. Lactate dehydrogenase C catalyzes the conversion of L-lactate and NAD to pyruvate and NADH in the final step of anaerobic glycolysis. LDHC is testis-specific and belongs to the lactate dehydrogenase family. Two transcript variants have been detected which differ in the 5' untranslated region.</p> <p>Alias Symbols: LDH3, LDHX, MGC111073, CT32</p> <p>Protein Interaction Partner: MAPK7, SUMO2, RBL2, LIG4, BRCA1,</p> <p>Protein Size: 332</p>
Molecular Weight:	36 kDa
Gene ID:	3948
NCBI Accession:	NM_002301 , NP_002292
UniProt:	P07864
Pathways:	Ribonucleoside Biosynthetic Process , Warburg Effect

Application Details

Application Notes:	Optimal working dilutions should be determined experimentally by the investigator.
Comment:	Antigen size: 332 AA
Restrictions:	For Research Use only

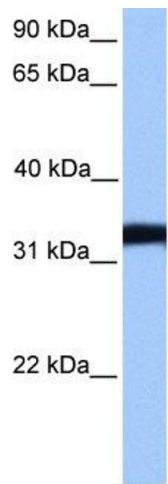
Handling

Format:	Liquid
Concentration:	Lot specific
Buffer:	Liquid. Purified antibody supplied in 1x PBS buffer with 0.09 % (w/v) sodium azide and 2 % sucrose.
Preservative:	Sodium azide
Precaution of Use:	This product contains Sodium azide: a POISONOUS AND HAZARDOUS SUBSTANCE which should be handled by trained staff only.
Handling Advice:	Avoid repeated freeze-thaw cycles.

Handling

Storage:	-20 °C
Storage Comment:	For short term use, store at 2-8°C up to 1 week. For long term storage, store at -20°C in small aliquots to prevent freeze-thaw cycles.

Images



Western Blotting

Image 1. WB Suggested Anti-LDHC Antibody Titration:
0.2-1 ug/ml
Positive Control: NTERA2 cell lysate