

Datasheet for ABIN2785487
anti-PDE1A antibody (C-Term)[Go to Product page](#)

4 Images

Overview

Quantity:	100 µL
Target:	PDE1A
Binding Specificity:	C-Term
Reactivity:	Human, Mouse, Rat, Dog
Host:	Rabbit
Clonality:	Polyclonal
Conjugate:	This PDE1A antibody is un-conjugated
Application:	Western Blotting (WB)

Product Details

Immunogen:	The immunogen is a synthetic peptide directed towards the C terminal region of human PDE1A
Sequence:	AVDLKSFKNN LVDIIQQNKE RWKELAAQGE SDLHKNSIDL VNAEEKHDET
Predicted Reactivity:	Dog: 93%, Human: 100%, Mouse: 86%, Rat: 93%
Characteristics:	This is a rabbit polyclonal antibody against PDE1A. It was validated on Western Blot.
Purification:	Affinity Purified

Target Details

Target:	PDE1A
Alternative Name:	PDE1A (PDE1A Products)
Background:	PDE1A belongs to the cyclic nucleotide phosphodiesterase family. It has a higher affinity for

Target Details

cGMP than for cAMP. The exact function of PDE1A remains unknown.

Alias Symbols: HCAM1, HSPDE1A, MGC26303

Protein Interaction Partner: UBC, APP, APOA1, CALM1,

Protein Size: 545

Molecular Weight: 60 kDa

Gene ID: 5136

NCBI Accession: [NM_005019](#), [NP_005010](#)

Pathways: [Neurotrophin Signaling Pathway](#), [cAMP Metabolic Process](#), [G-protein mediated Events](#),
[Interaction of EGFR with phospholipase C-gamma](#)

Application Details

Application Notes: Optimal working dilutions should be determined experimentally by the investigator.

Comment: Antigen size: 545 AA

Restrictions: For Research Use only

Handling

Format: Liquid

Concentration: Lot specific

Buffer: Liquid. Purified antibody supplied in 1x PBS buffer with 0.09 % (w/v) sodium azide and 2 % sucrose.

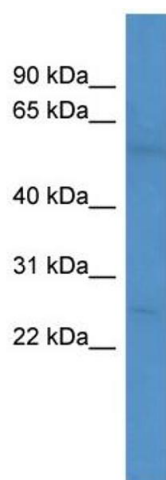
Preservative: Sodium azide

Precaution of Use: This product contains Sodium azide: a POISONOUS AND HAZARDOUS SUBSTANCE which should be handled by trained staff only.

Handling Advice: Avoid repeated freeze-thaw cycles.

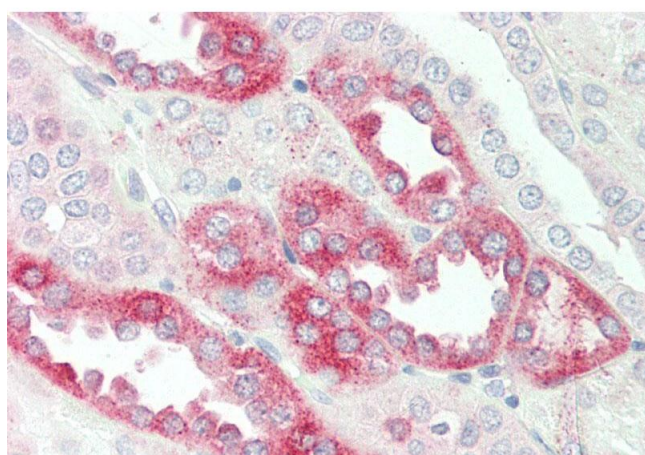
Storage: -20 °C

Storage Comment: For short term use, store at 2-8°C up to 1 week. For long term storage, store at -20°C in small aliquots to prevent freeze-thaw cycles.



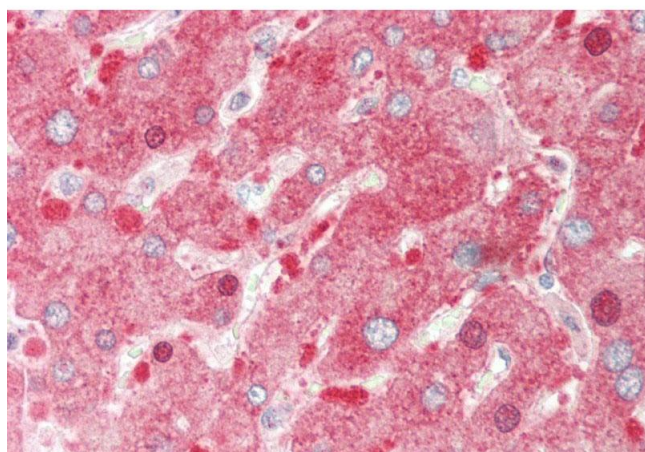
Western Blotting

Image 1. WB Suggested Anti-PDE1A Antibody Titration: 0.2-1 ug/ml ELISA Titer: 1:312500 Positive Control: Jurkat cell lysate



Immunohistochemistry

Image 2. Rabbit Anti-PDE1A antibody Catalog Number: ARP53625 Formalin Fixed Paraffin Embedded Tissue: Human Kidney Primary antibody Concentration: 1:100 Secondary Antibody: Donkey anti-Rabbit-Cy3 Secondary Antibody Concentration: 1:200 Magnification: 20x Exposure Time: 0.5-2.0sec



Immunohistochemistry

Image 3. Rabbit Anti-PDE1A antibody Catalog Number: ARP53625 Formalin Fixed Paraffin Embedded Tissue: Human Liver Primary antibody Concentration: 1:100 Secondary Antibody: Donkey anti-Rabbit-Cy3 Secondary Antibody Concentration: 1:200 Magnification: 20x Exposure Time: 0.5-2.0sec

Please check the [product details page](#) for more images. Overall 4 images are available for ABIN2785487.