

Datasheet for ABIN2785491
anti-PDHA2 antibody (N-Term)[Go to Product page](#)

2 Images

Overview

| | |
|----------------------|---|
| Quantity: | 100 µL |
| Target: | PDHA2 (PDHa2) |
| Binding Specificity: | N-Term |
| Reactivity: | Human, Mouse, Rat, Horse, Rabbit, Cow, Dog, Guinea Pig, Zebrafish (Danio rerio) |
| Host: | Rabbit |
| Clonality: | Polyclonal |
| Conjugate: | This PDHA2 antibody is un-conjugated |
| Application: | Western Blotting (WB) |

Product Details

| | |
|-----------------------|--|
| Immunogen: | The immunogen is a synthetic peptide directed towards the N terminal region of human PDHA2 |
| Sequence: | RMELKADQLY KQKFIRGFCH LCDGQEACCV GLEAGINPSD HVITSYRAHG |
| Predicted Reactivity: | Cow: 93%, Dog: 79%, Guinea Pig: 79%, Horse: 85%, Human: 100%, Mouse: 93%, Rabbit: 100%, Rat: 86%, Zebrafish: 79% |
| Characteristics: | This is a rabbit polyclonal antibody against PDHA2. It was validated on Western Blot. |
| Purification: | Affinity Purified |

Target Details

| | |
|-------------------|--|
| Target: | PDHA2 (PDHa2) |
| Alternative Name: | PDHA2 (PDHa2 Products) |

Target Details

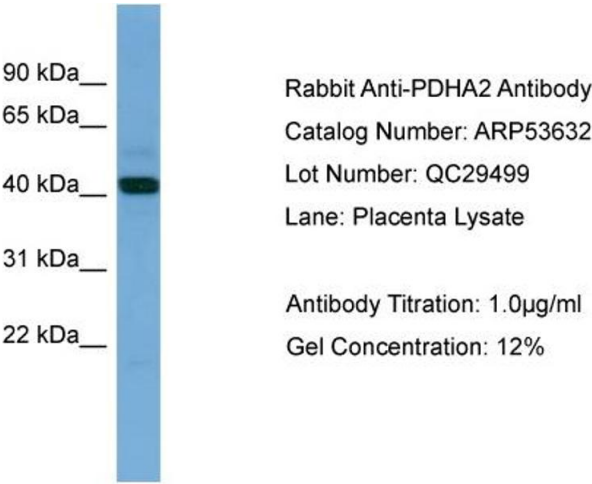
| | |
|-------------------|--|
| Background: | <p>The pyruvate dehydrogenase complex catalyzes the overall conversion of pyruvate to acetyl-CoA and CO₂. It contains multiple copies of three enzymatic components: pyruvate dehydrogenase (E1), dihydrolipoamide acetyltransferase (E2) and lipoamide dehydrogenase (E3).</p> <p>Alias Symbols: MGC149517, MGC149518, PDHAL</p> <p>Protein Interaction Partner: MSMO1, HNRNPU, DLAT, CAND1, COPS5, CUL3, PDHB,</p> <p>Protein Size: 388</p> |
| Molecular Weight: | 43 kDa |
| Gene ID: | 5161 |
| NCBI Accession: | NM_005390 , NP_005381 |
| UniProt: | P29803 |
| Pathways: | Warburg Effect |

Application Details

| | |
|--------------------|--|
| Application Notes: | Optimal working dilutions should be determined experimentally by the investigator. |
| Comment: | Antigen size: 388 AA |
| Restrictions: | For Research Use only |

Handling

| | |
|--------------------|---|
| Format: | Liquid |
| Concentration: | Lot specific |
| Buffer: | Liquid. Purified antibody supplied in 1x PBS buffer with 0.09 % (w/v) sodium azide and 2 % sucrose. |
| Preservative: | Sodium azide |
| Precaution of Use: | This product contains Sodium azide: a POISONOUS AND HAZARDOUS SUBSTANCE which should be handled by trained staff only. |
| Handling Advice: | Avoid repeated freeze-thaw cycles. |
| Storage: | -20 °C |
| Storage Comment: | For short term use, store at 2-8°C up to 1 week. For long term storage, store at -20°C in small aliquots to prevent freeze-thaw cycles. |

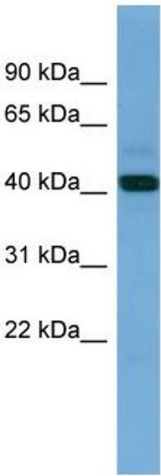


Western Blotting

Image 1. WB Suggested Anti-PDHA2

Antibody Titration: 0.2-1 µg/mL ELISA Titer: 1:1562500

Positive Control: Human Placenta



Western Blotting

Image 2. WB Suggested Anti-PDHA2 Antibody Titration:

0.2-1 ug/ml

ELISA Titer: 1:1562500

Positive Control: Human Placenta